

The Sheen Of
Sophistication...

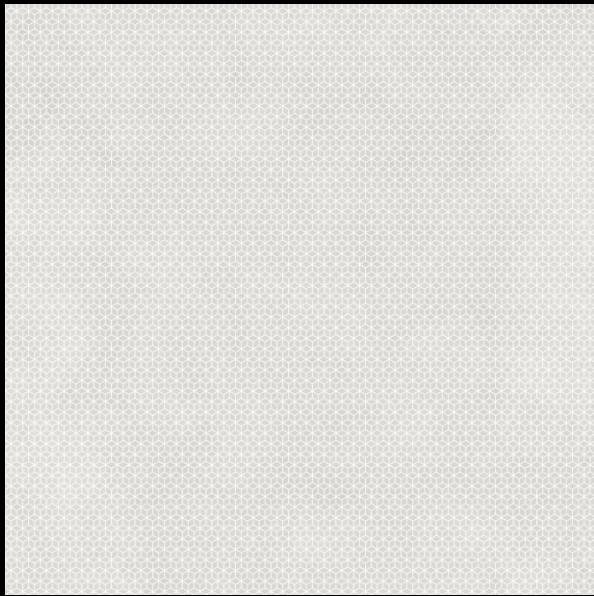
Shine
Carving ✦



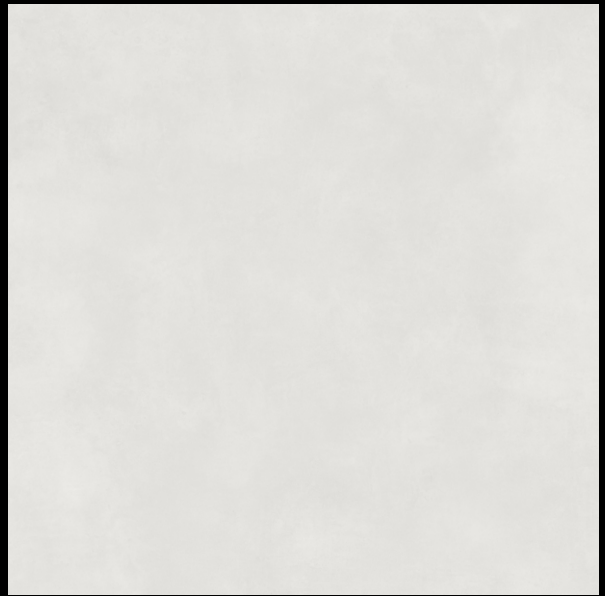
Shine Carving+

This tile carries an intricately designed pattern with mild tones that feel unique to the touch. The visual effect is very elegant and the intriguing lustre perfectly captures a fashionable modern residential and commercial design. Not only are these tiles all-inclusive to make a statement on their own, but also merge flawlessly with the other elements of the space, creating a more cohesive design!

COBWEB BIANCO DECOR

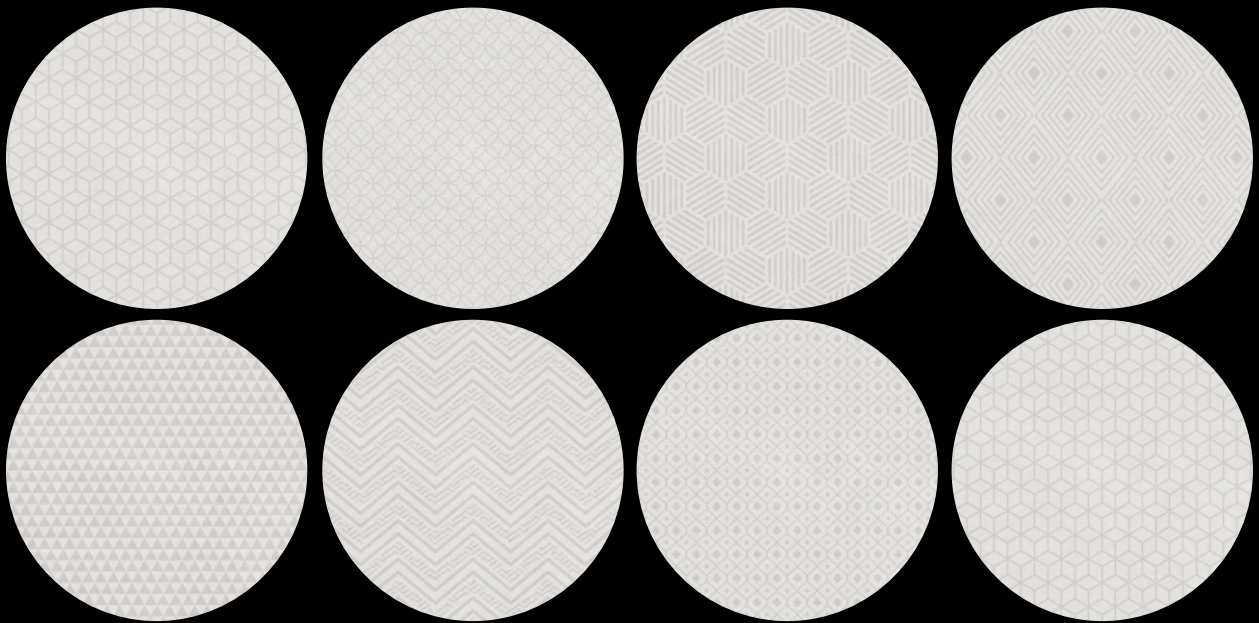


COBWEB BIANCO BASE



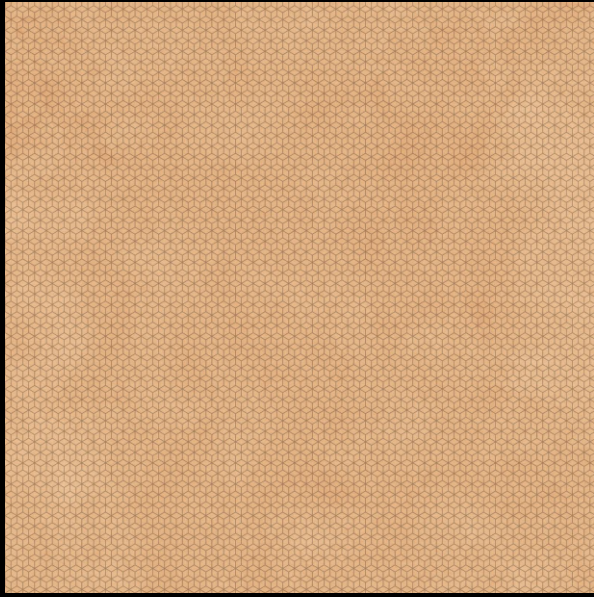
Randoms : 08

*ALL RANDOM ZOOMED PARTS





COBWEB BROWN DECOR

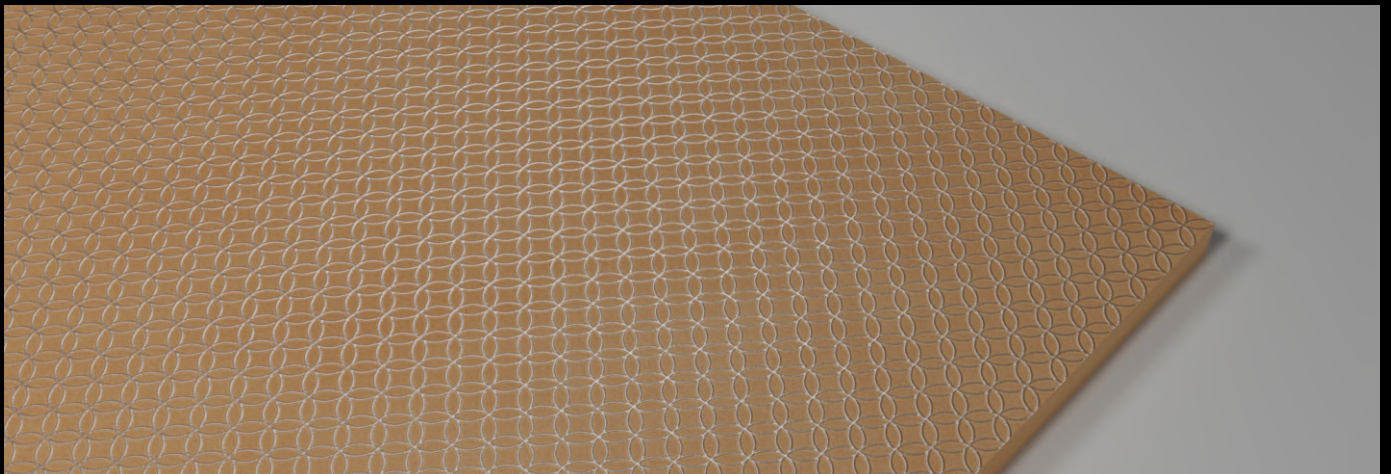
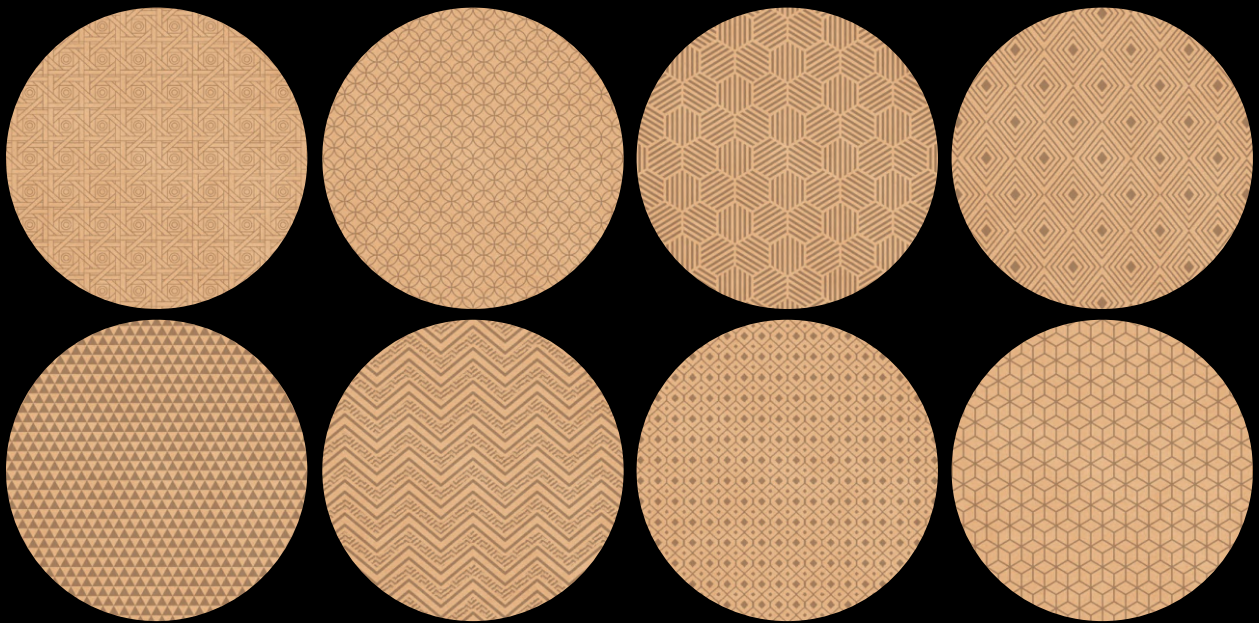


COBWEB BROWN BASE



Randoms : 08

*ALL RANDOM ZOOMED PARTS





LIFE IS LIKE
HARD TO CLIMB
BUT ONCE
YOU GET TO
THE TOP
IT'S ALL
BEAUTIFUL

LIFE IS LIKE
TO KEEP YOUR
BALANCE
You must keep
moving

PHOTOGRAPHY
LIFE IS LIKE
DON'T BE AFRAID TO
CAPTURE THE
GOOD TIMES
BECAUSE THEY
DON'T COME
BACK
SHOT

A
DAY
WITHOUT
LAUGHTER
IS A DAY
WASTED

CENTRAL
UPPER WEST S.
HARLEM
WASHINGTON HTS.

BELGR
S O F
ISTANBU



COBWEB CREMA DECOR

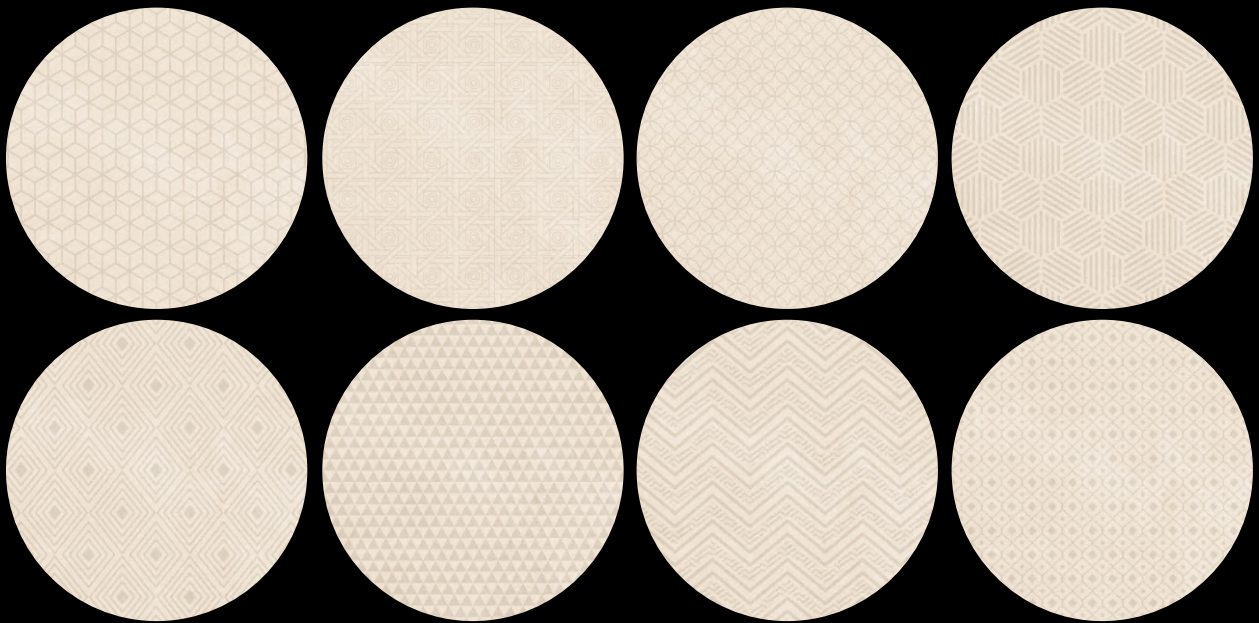


COBWEB CREMA BASE



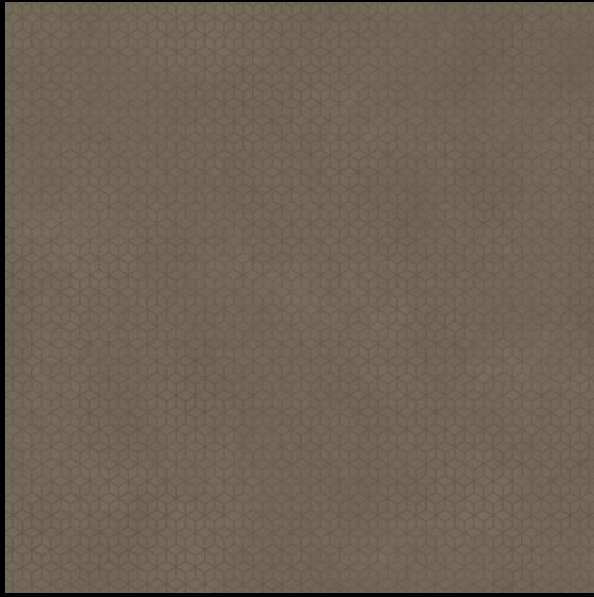
Randoms : 08

*ALL RANDOM ZOOMED PARTS





COBWEB CHOCO DECOR

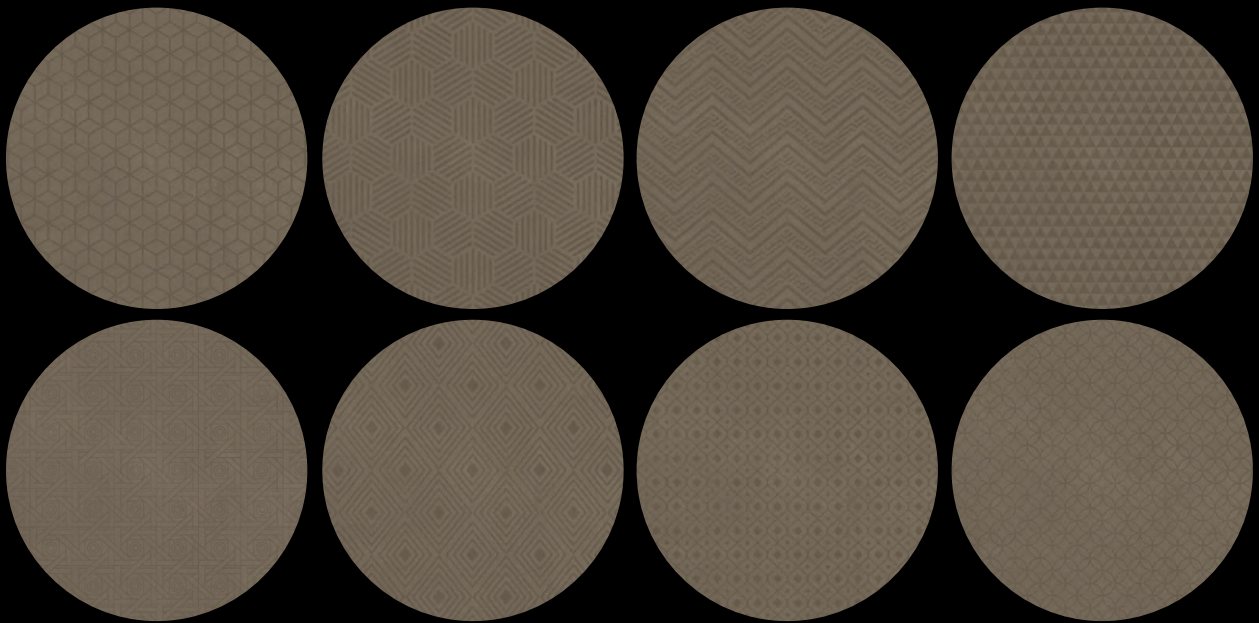


COBWEB CHOCO BASE



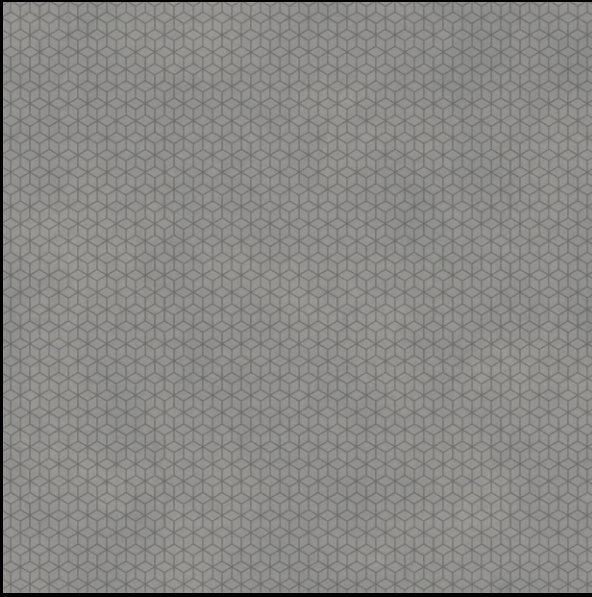
Randoms : 08

*ALL RANDOM ZOOMED PARTS

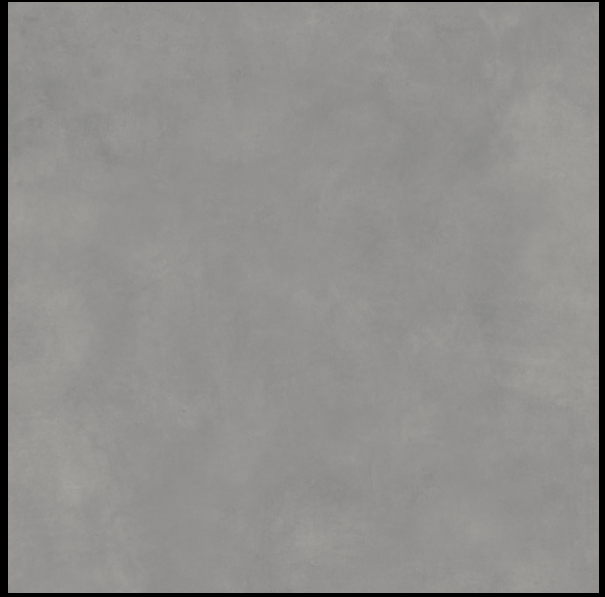




COBWEB GREY DECOR

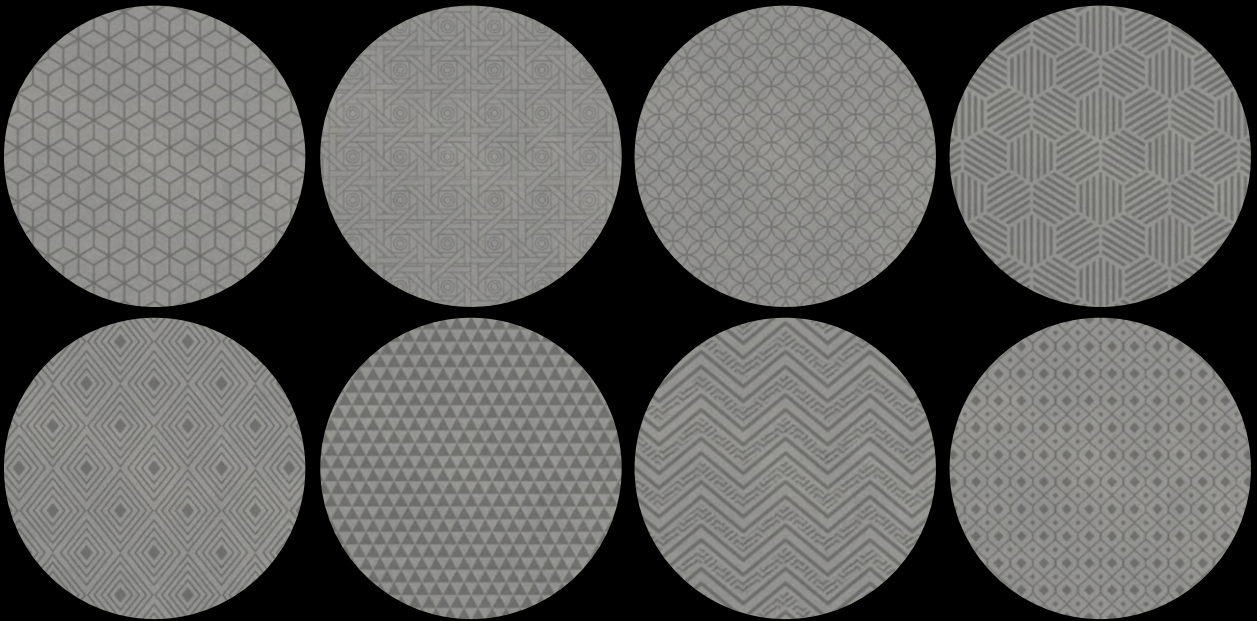


COBWEB GREY BASE



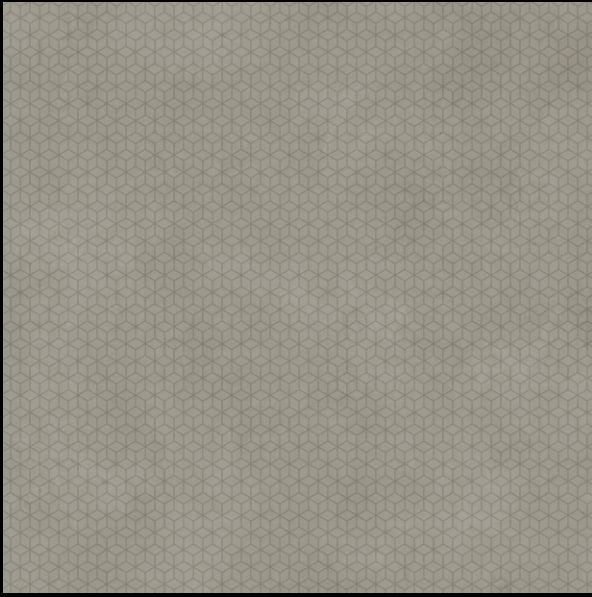
Randoms : 08

*ALL RANDOM ZOOMED PARTS

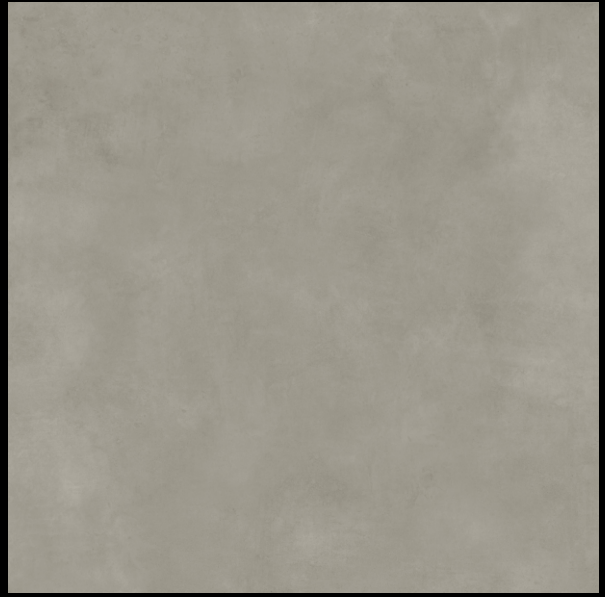




COBWEB ROSATA DECOR

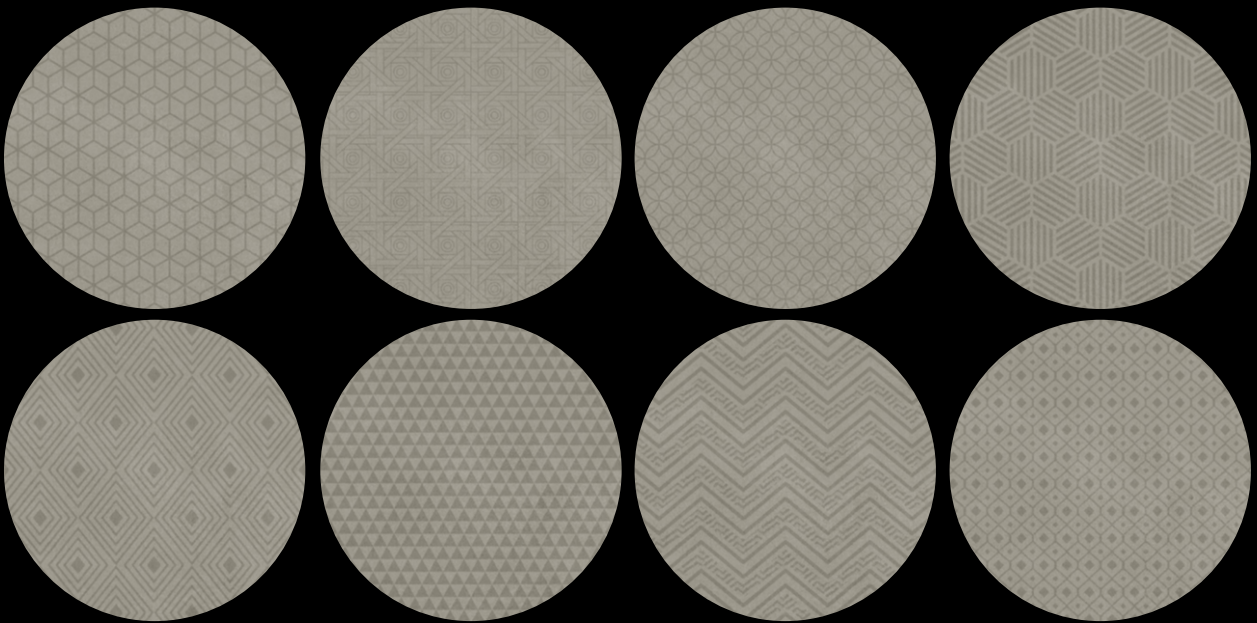


COBWEB ROSATA BASE



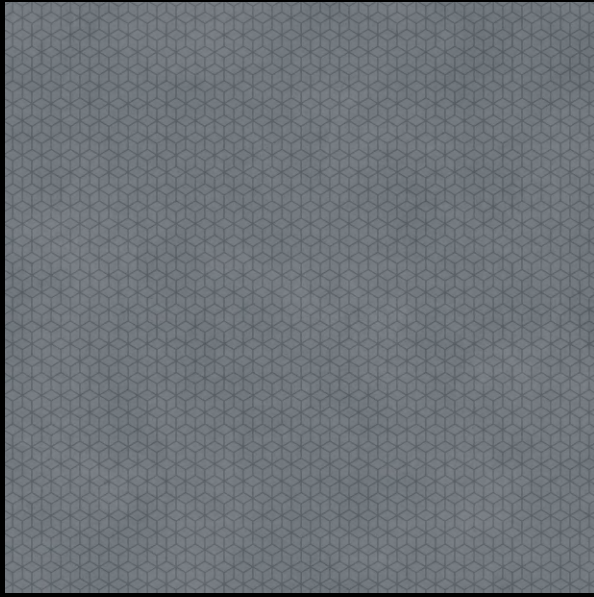
Randoms : 08

*ALL RANDOM ZOOMED PARTS

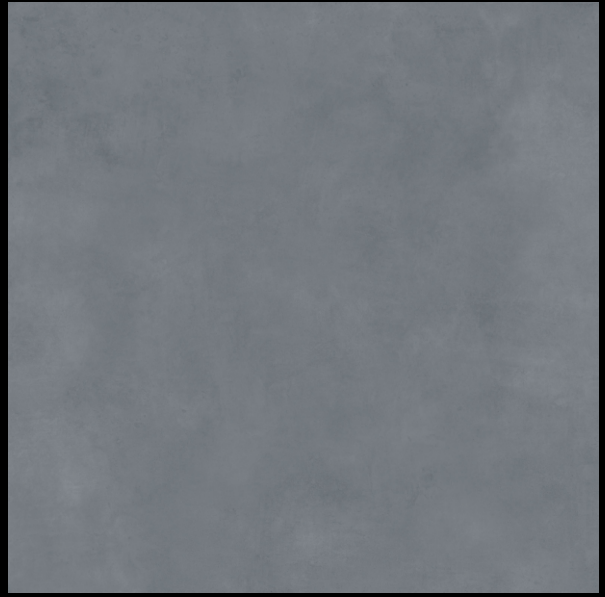




COBWEB BLUE DECOR

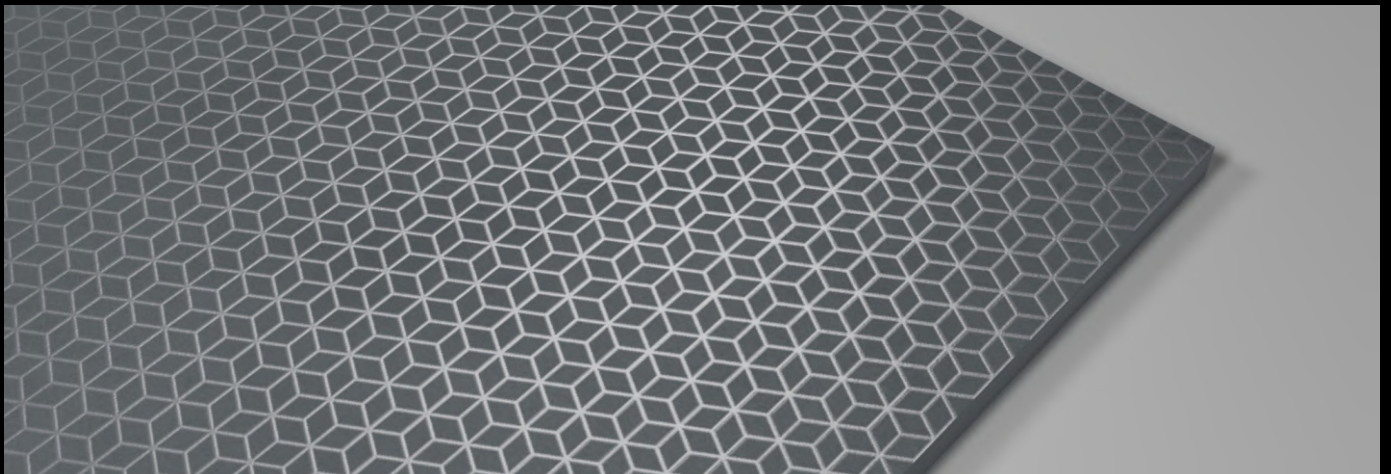
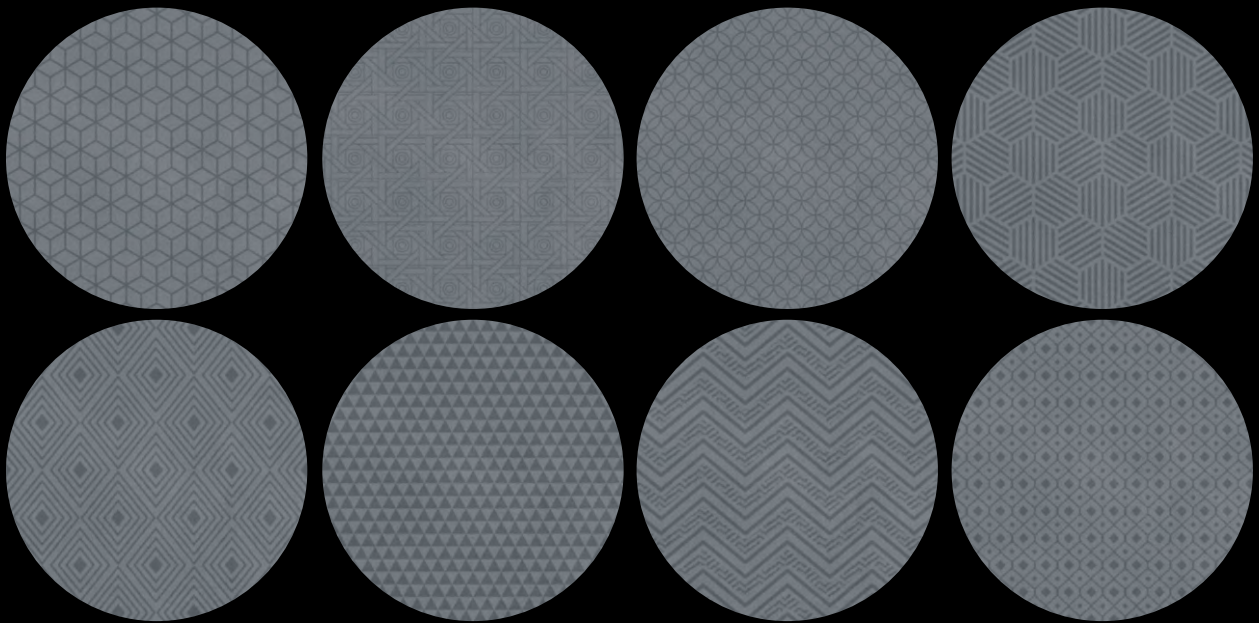


COBWEB BLUE BASE



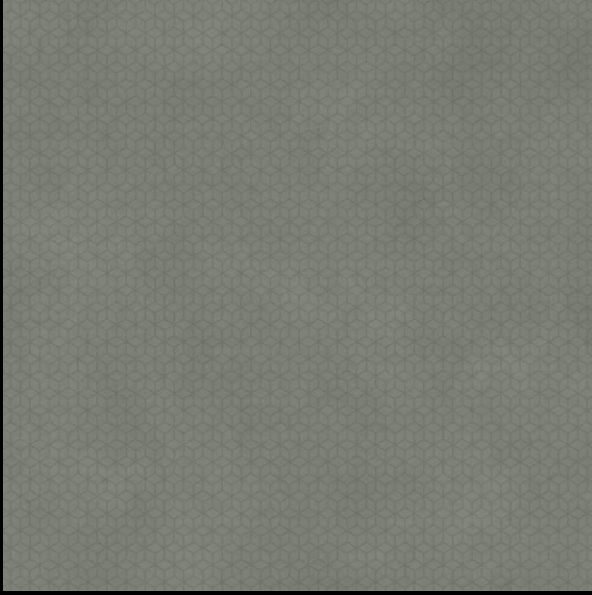
Randoms : 08

*ALL RANDOM ZOOMED PARTS

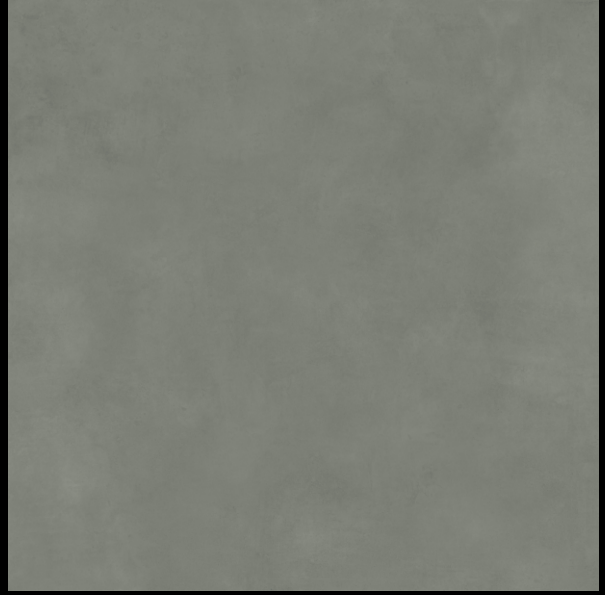




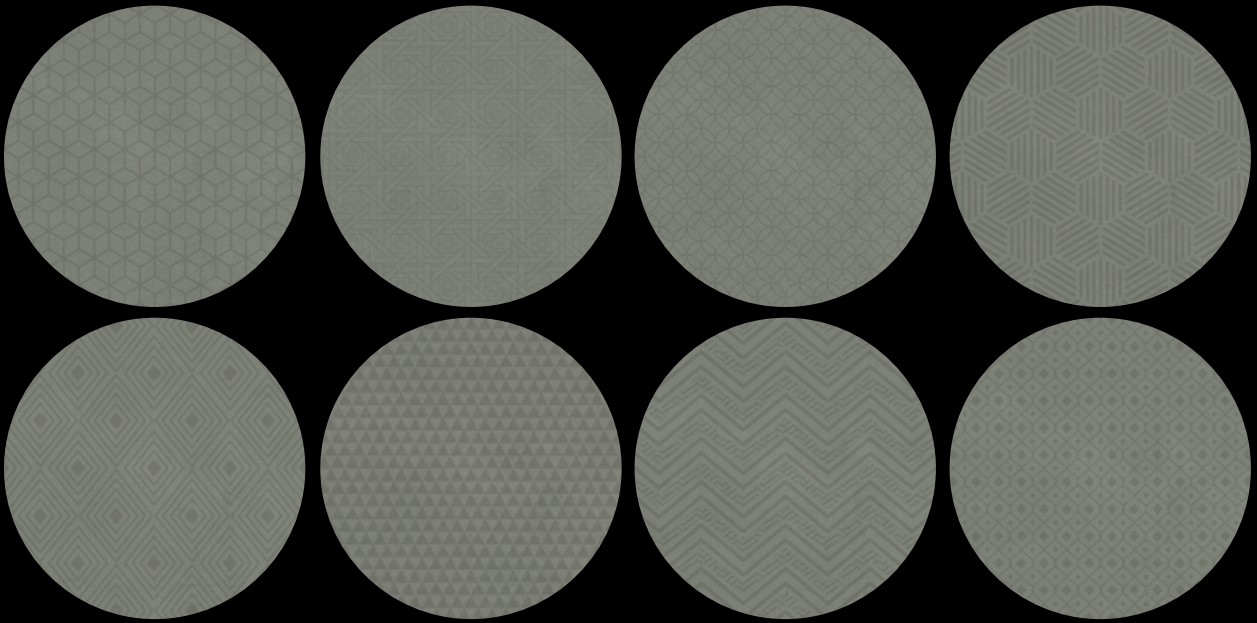
COBWEB GREEN DECOR 1



COBWEB GREEN BASE

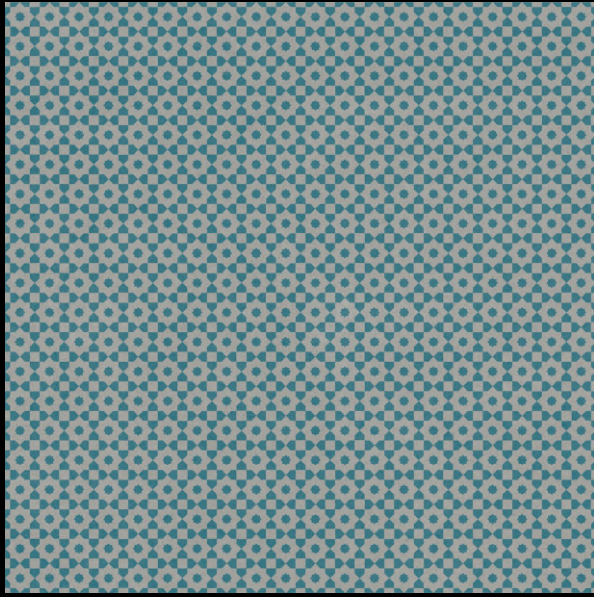


Randoms : 08

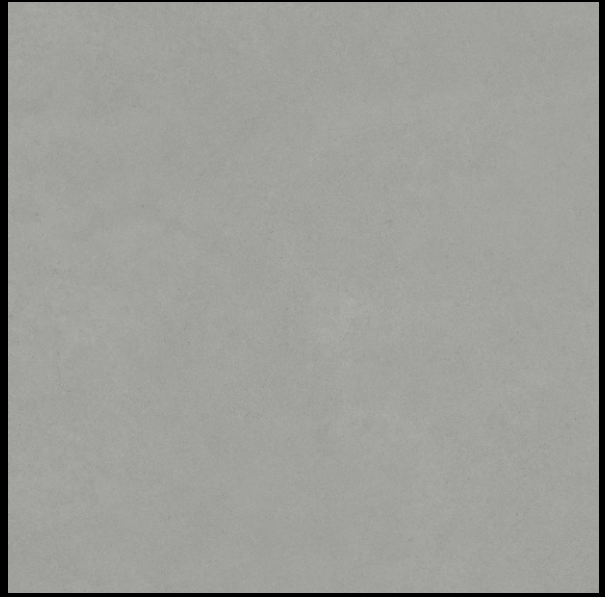




ENAMEL BLUE DECOR

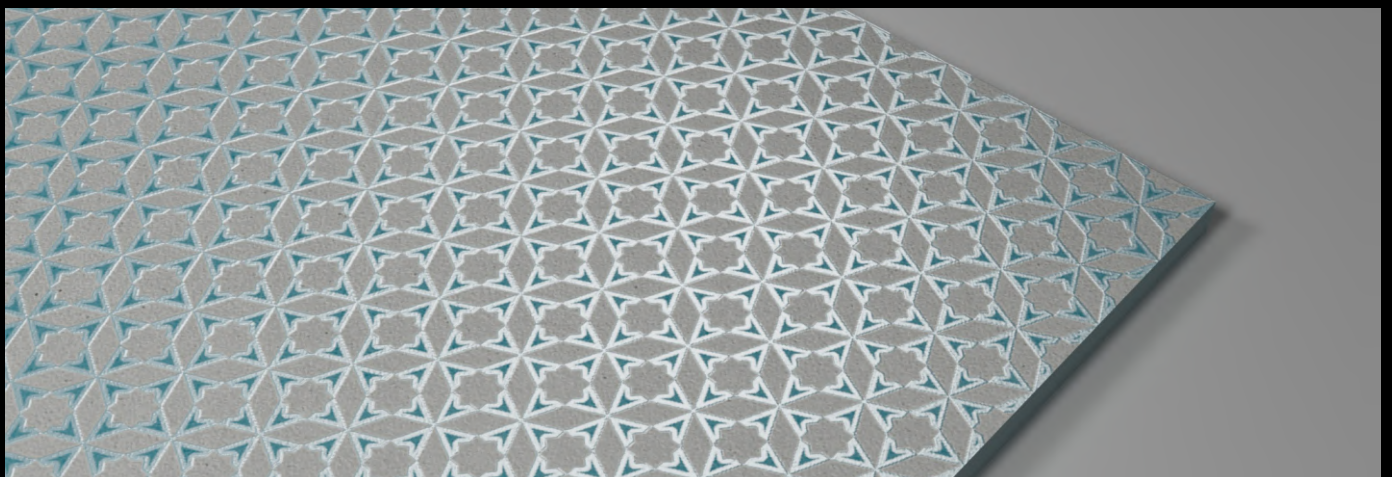
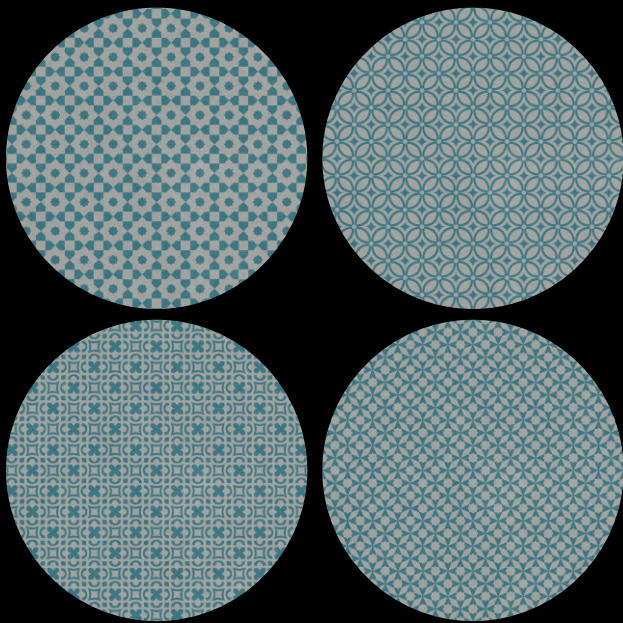


ENAMEL GREY BASE



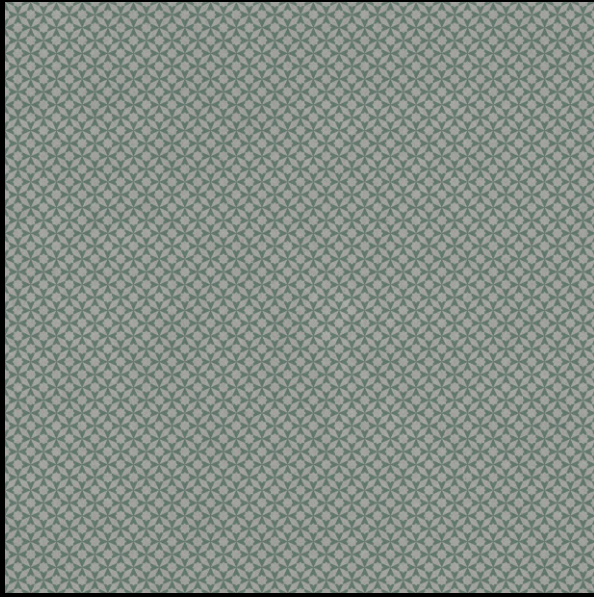
Randoms : 04

*ALL RANDOM ZOOMED PARTS

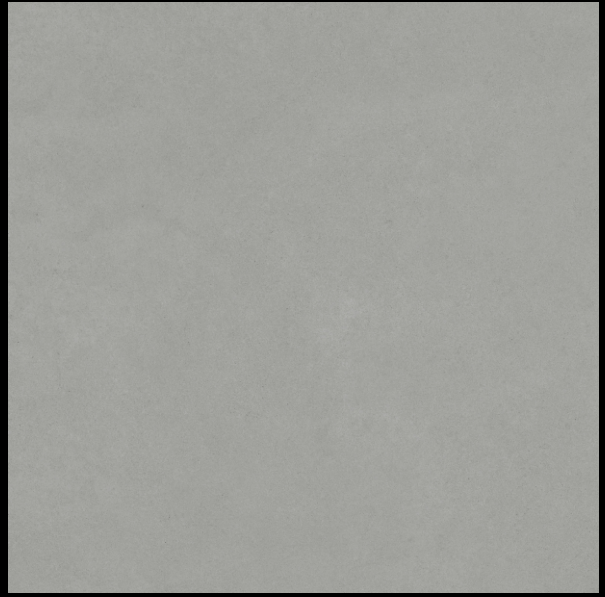




ENAMEL GREEN DECOR

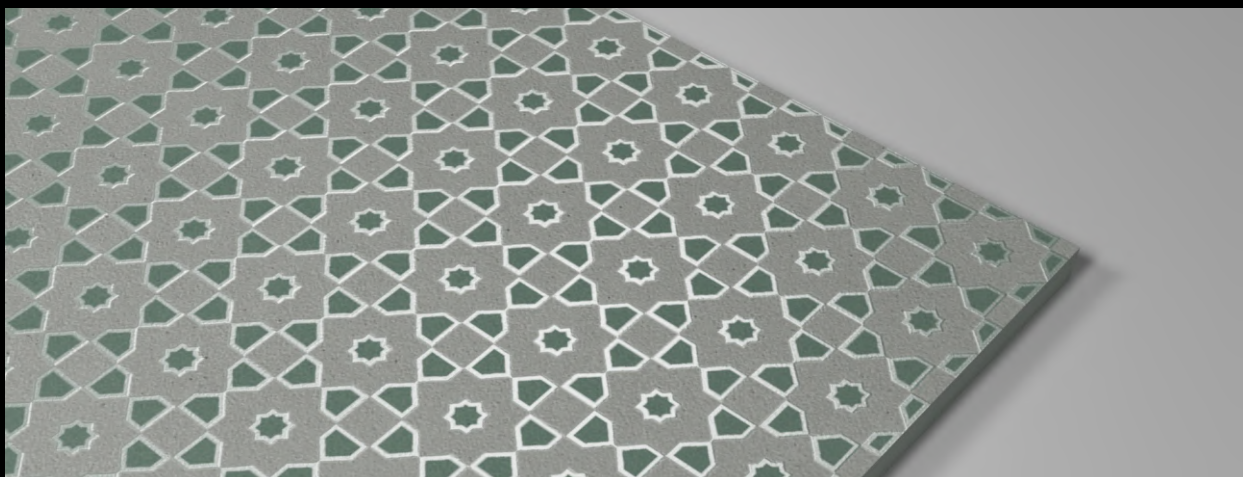
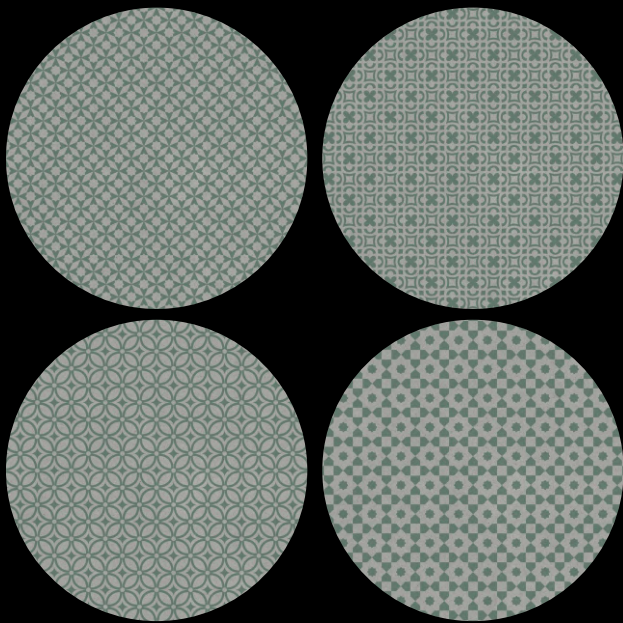


ENAMEL GREY BASE



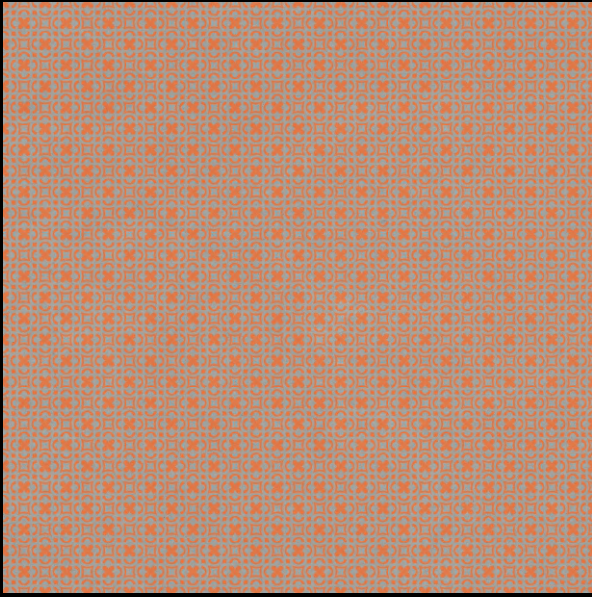
Randoms : 04

*ALL RANDOM ZOOMED PARTS

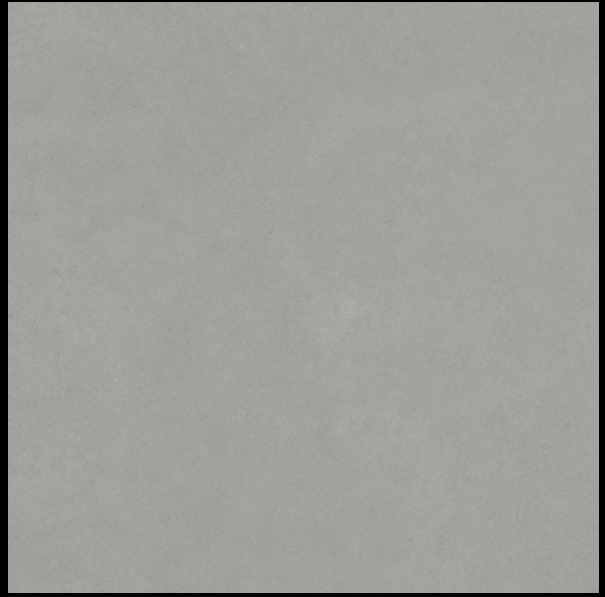




ENAMEL ORANGE DECOR

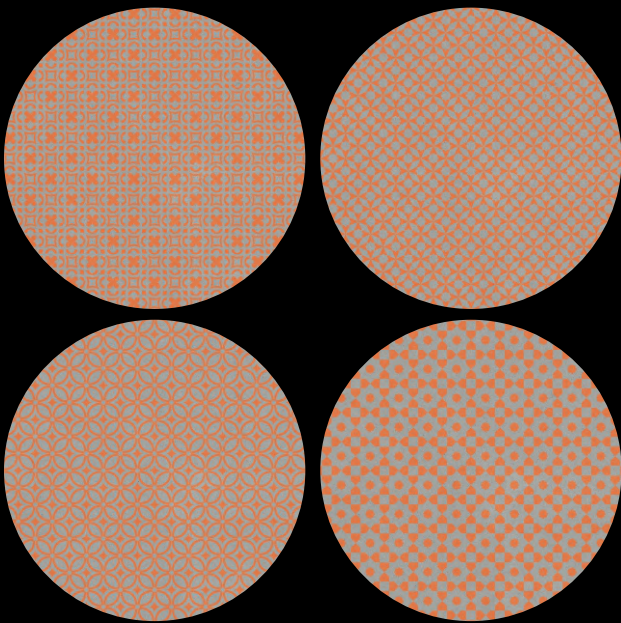


ENAMEL GREY BASE



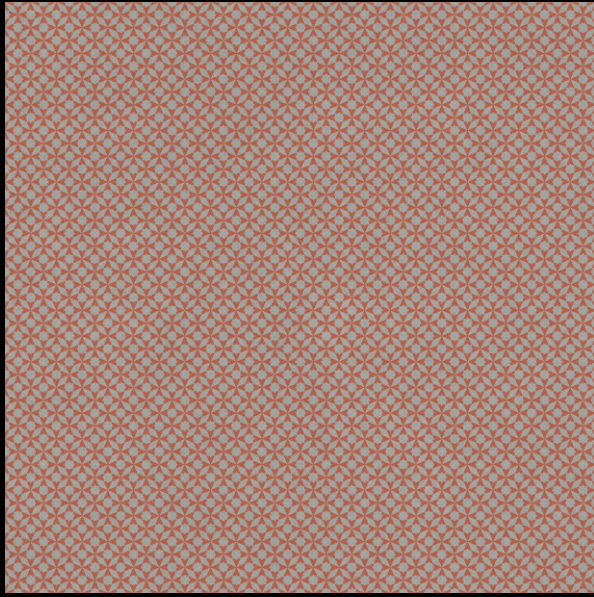
Randoms : 04

*ALL RANDOM ZOOMED PARTS

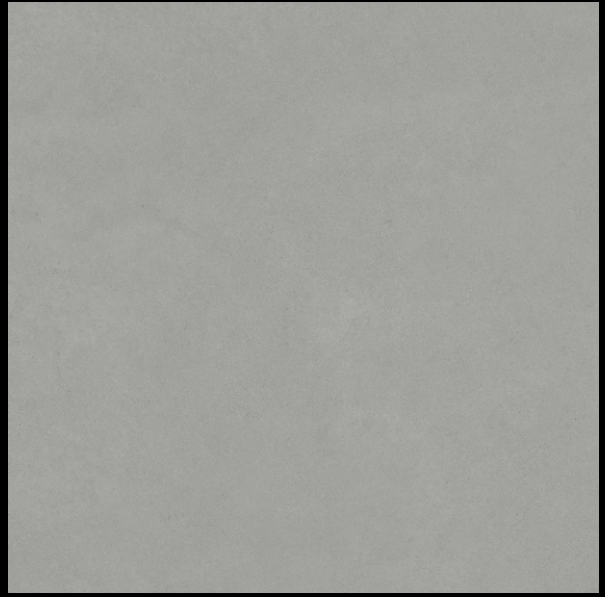




ENAMEL RED DECOR

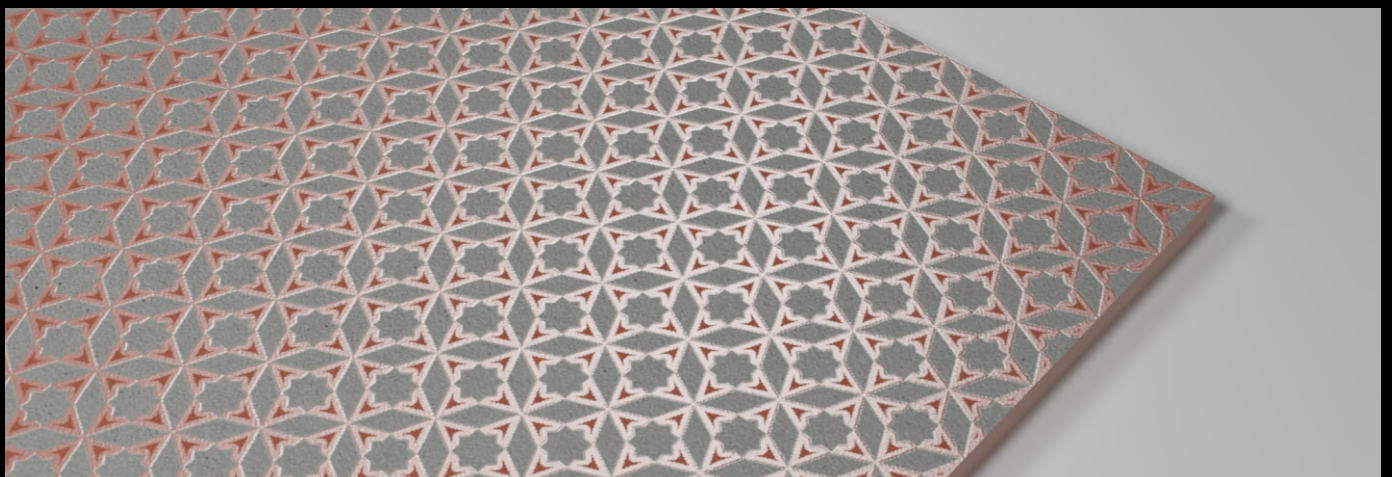
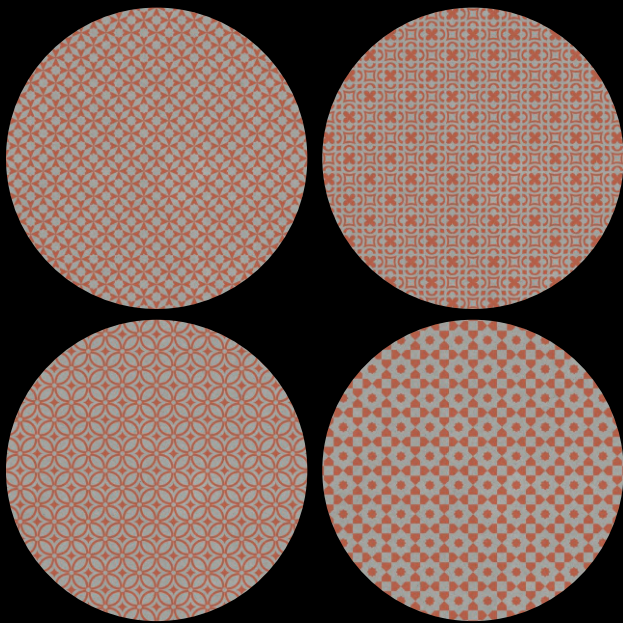


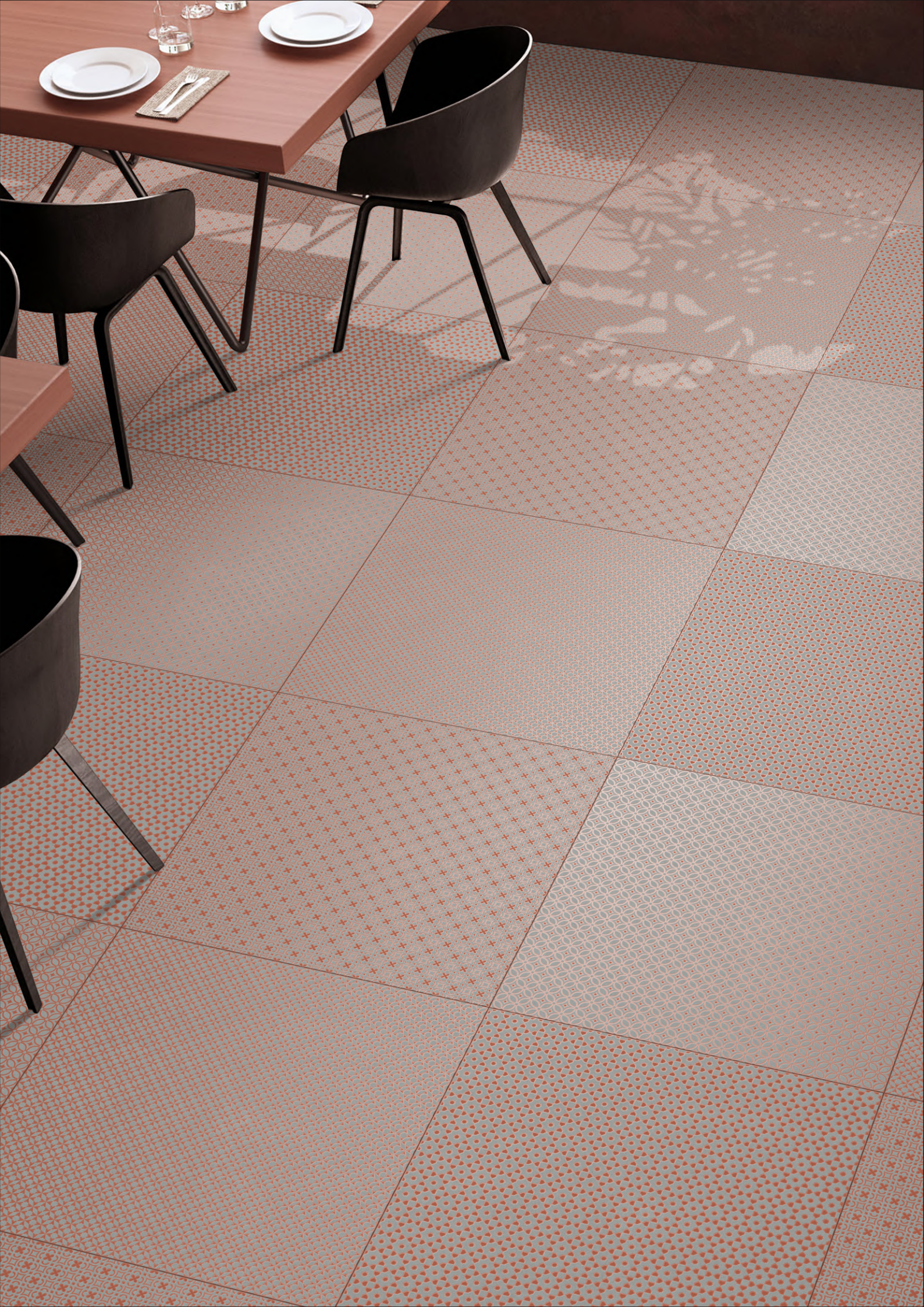
ENAMEL GREY BASE



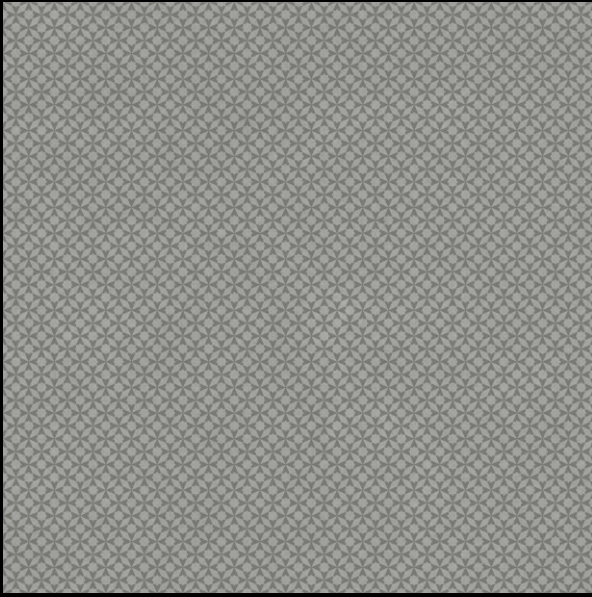
Randoms : 04

*ALL RANDOM ZOOMED PARTS

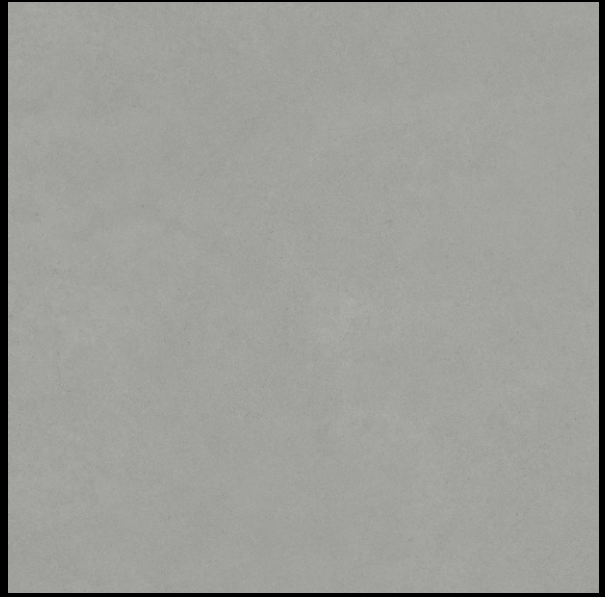




ENAMEL GREY DECOR 1

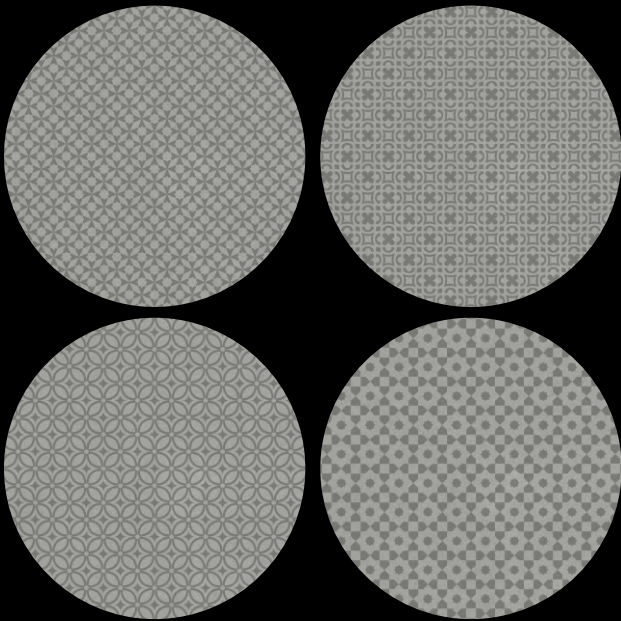


ENAMEL GREY BASE



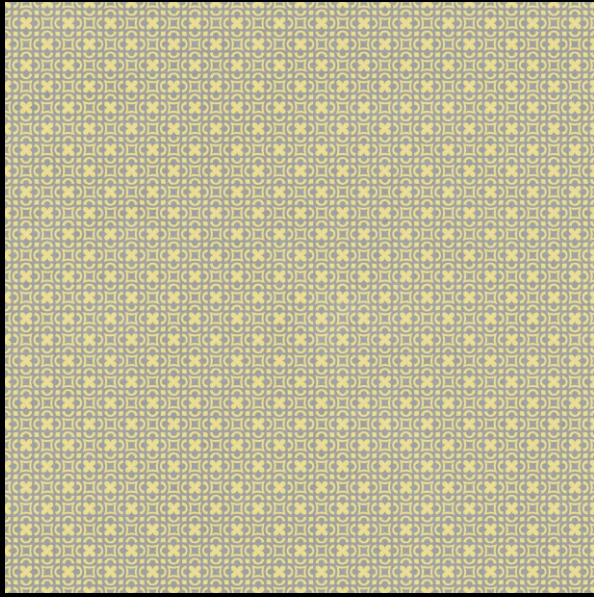
Randoms : 04

*ALL RANDOM ZOOMED PARTS

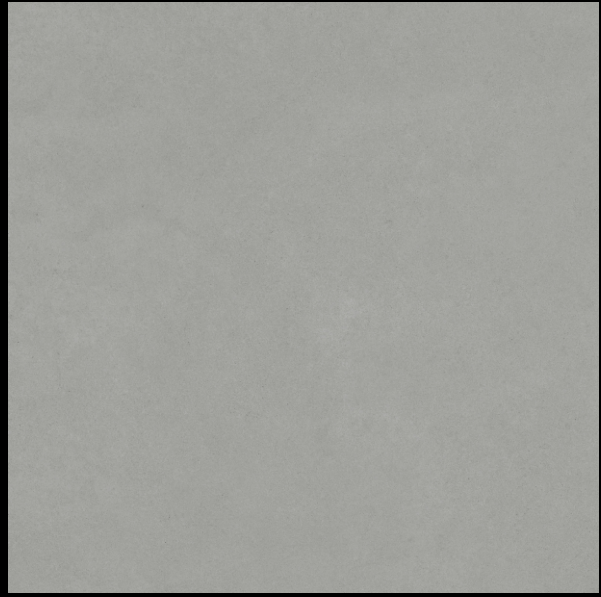




ENAMEL YELLOW DECOR

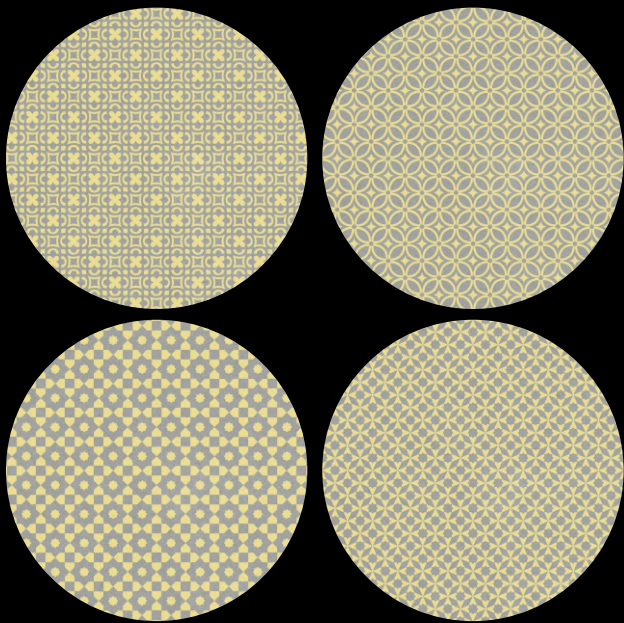


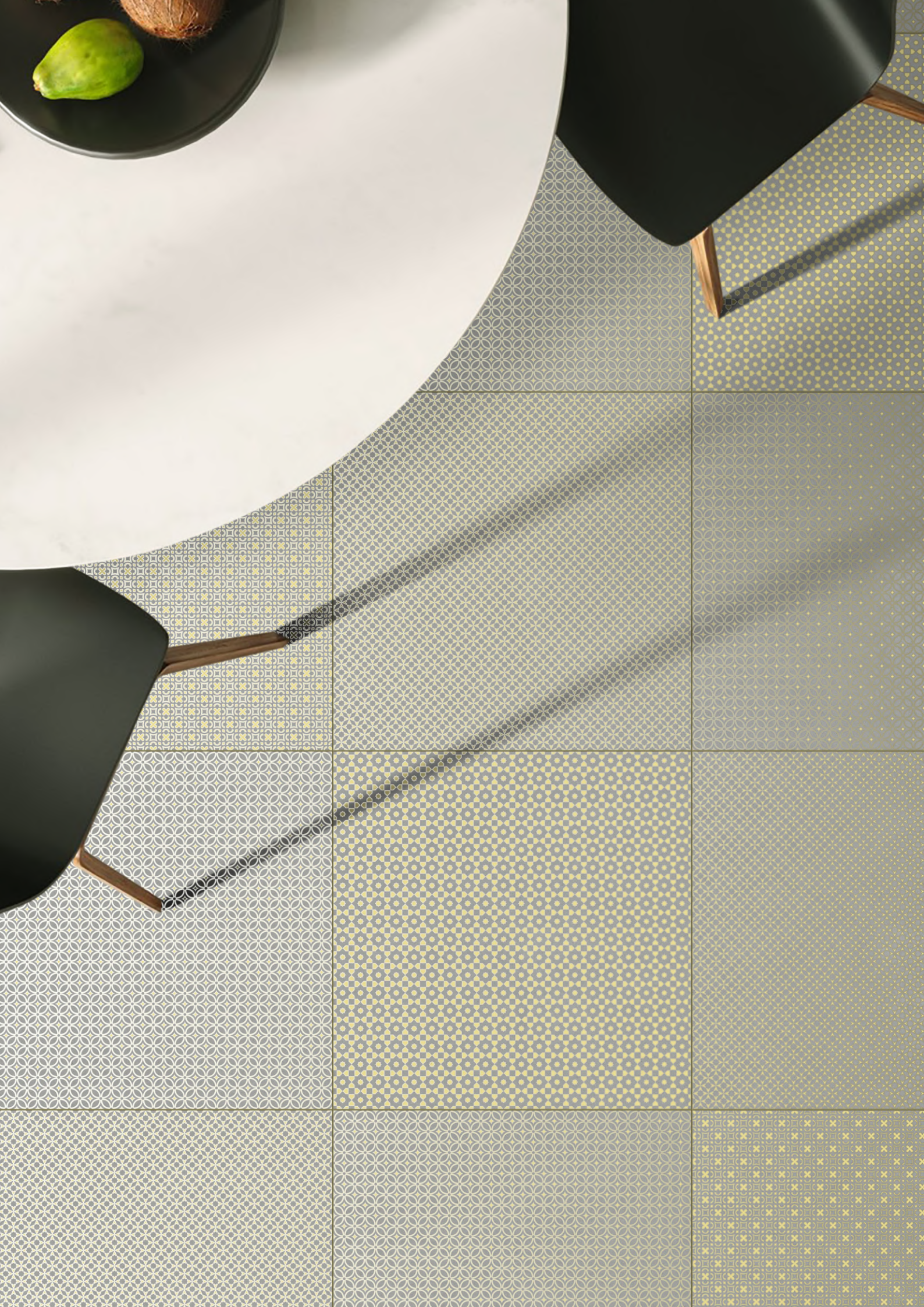
ENAMEL GREY BASE



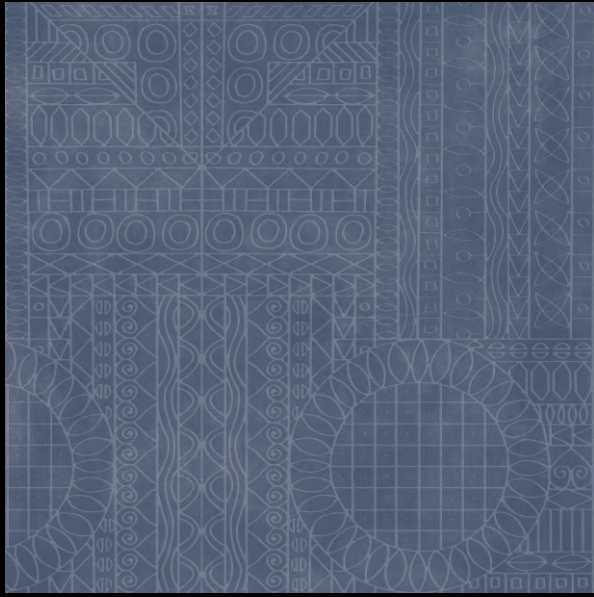
Randoms : 04

*ALL RANDOM ZOOMED PARTS



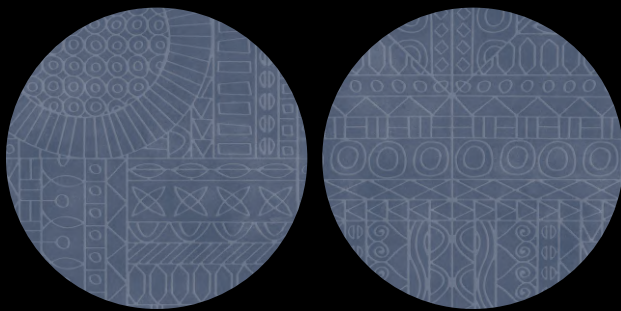


KABUL BLUE DECOR



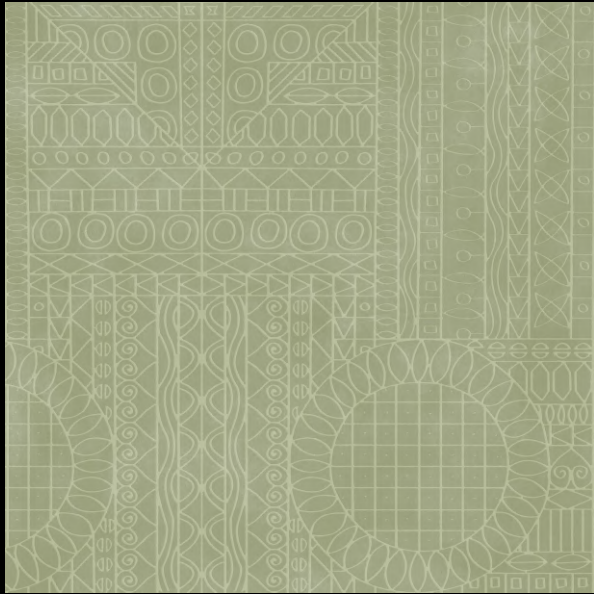
Randoms : 02

*ALL RANDOM ZOOMED PARTS



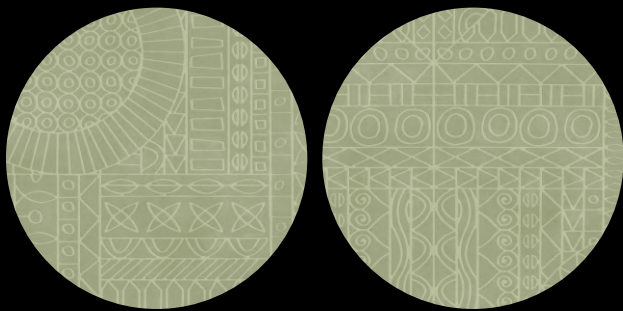


KABUL GREEN DECOR



Randoms : 02

*ALL RANDOM ZOOMED PARTS



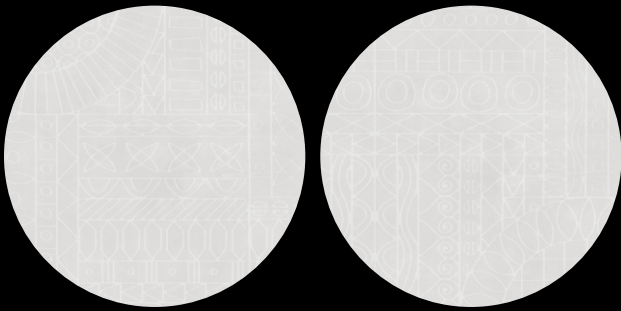


KABUL BIANCO DECOR



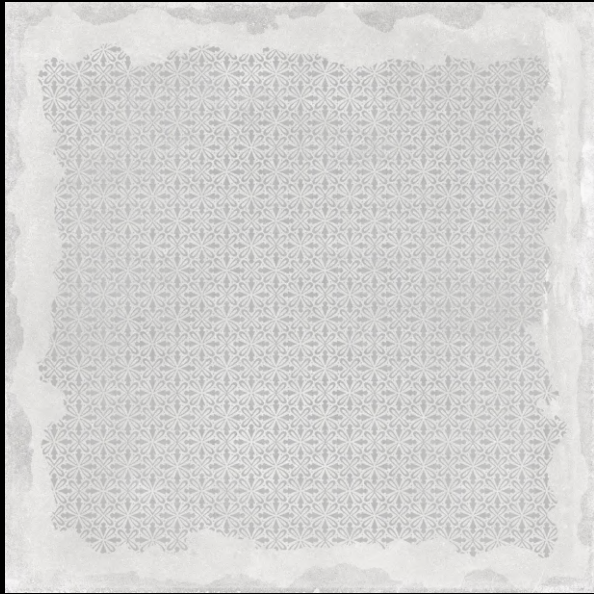
Randoms : 02

*ALL RANDOM ZOOMED PARTS

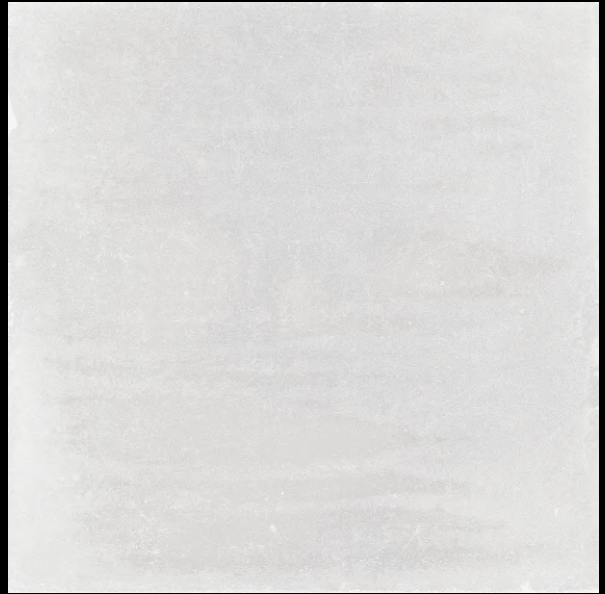




PERLA BIANCO DECOR

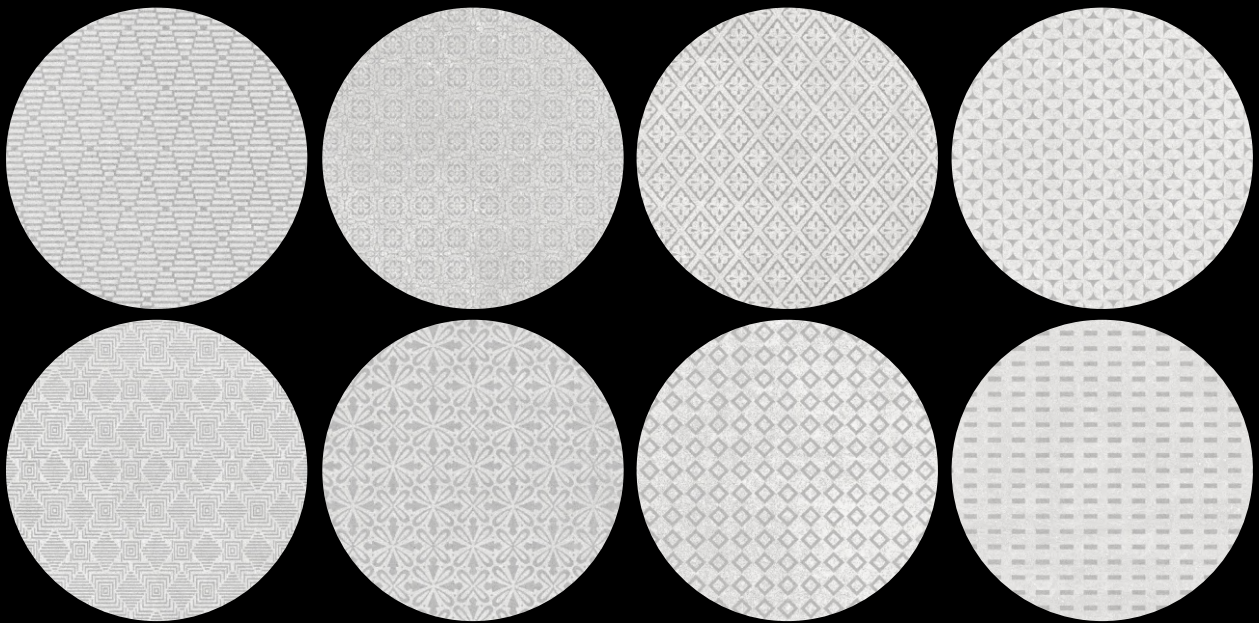


PERLA BIANCO



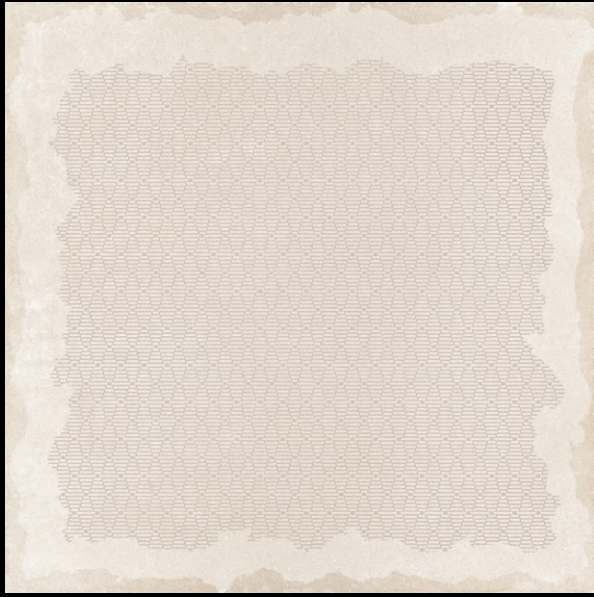
Randoms : 08

*ALL RANDOM ZOOMED PARTS

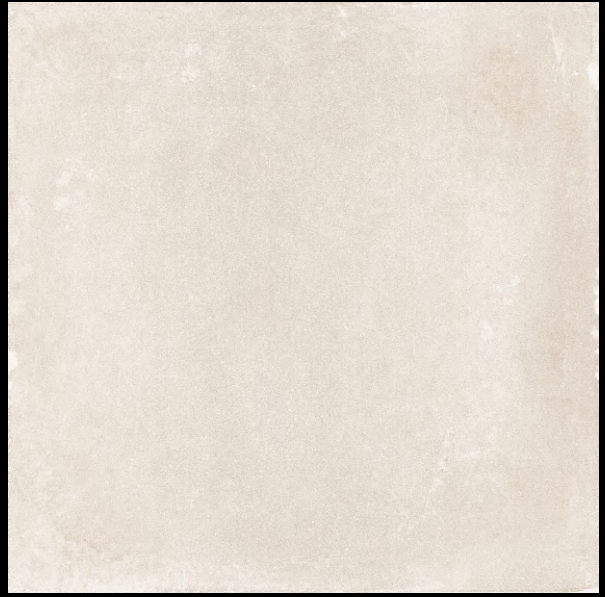




PERLA CREMA DECOR

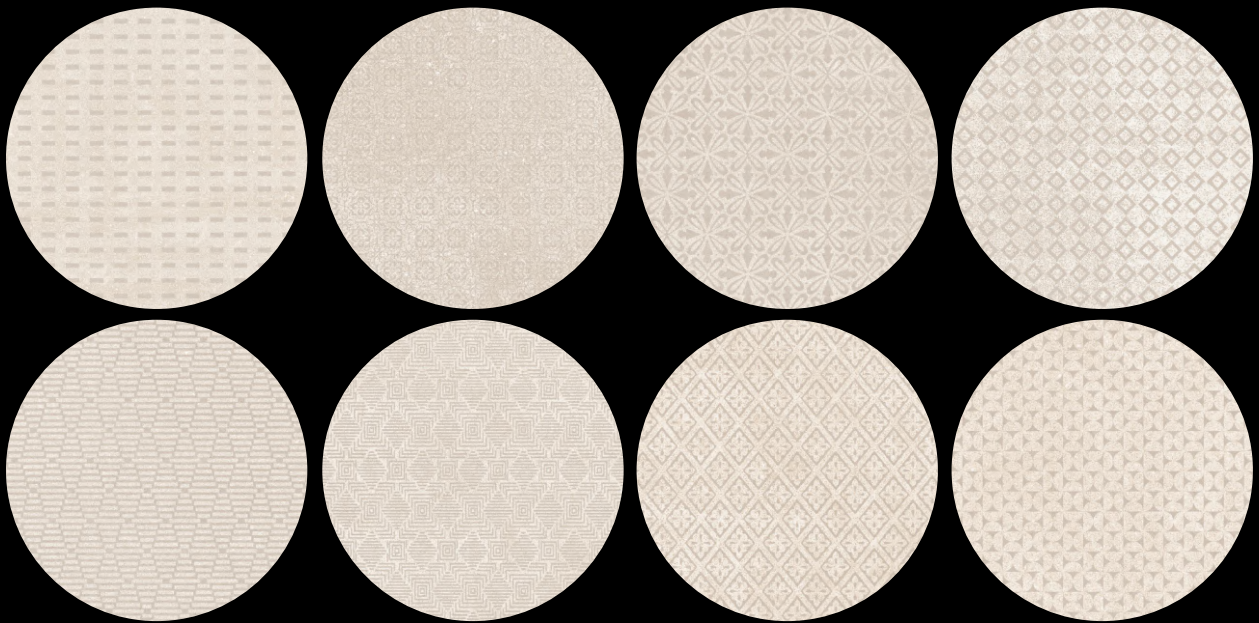


PERLA CREMA



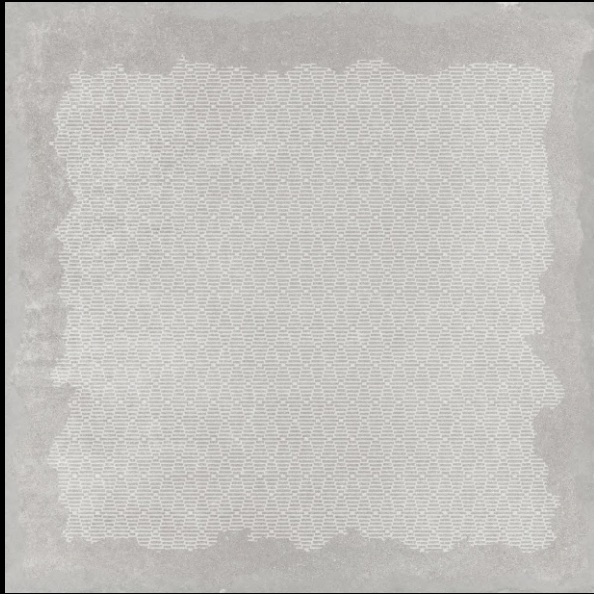
Randoms : 08

*ALL RANDOM ZOOMED PARTS

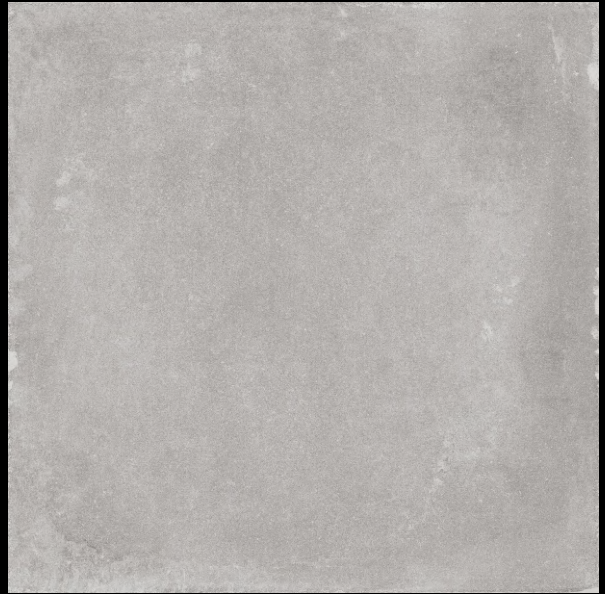




PERLA GRIS DECOR

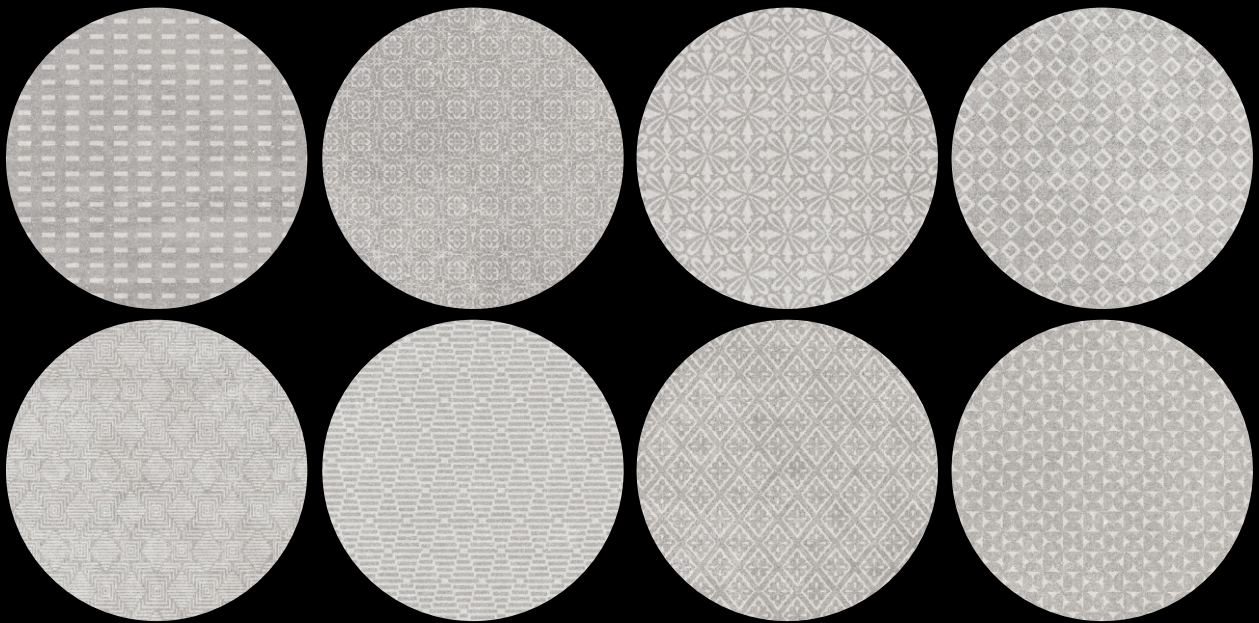


PERLA GRIS



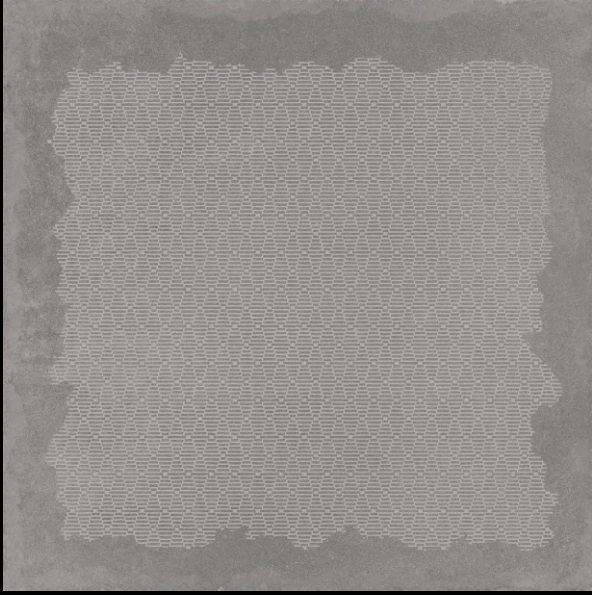
Randoms : 08

*ALL RANDOM ZOOMED PARTS

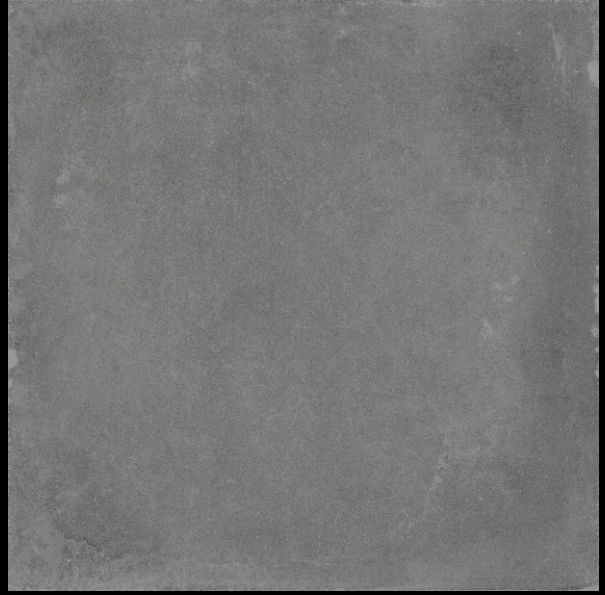




PERLA NERO DECOR

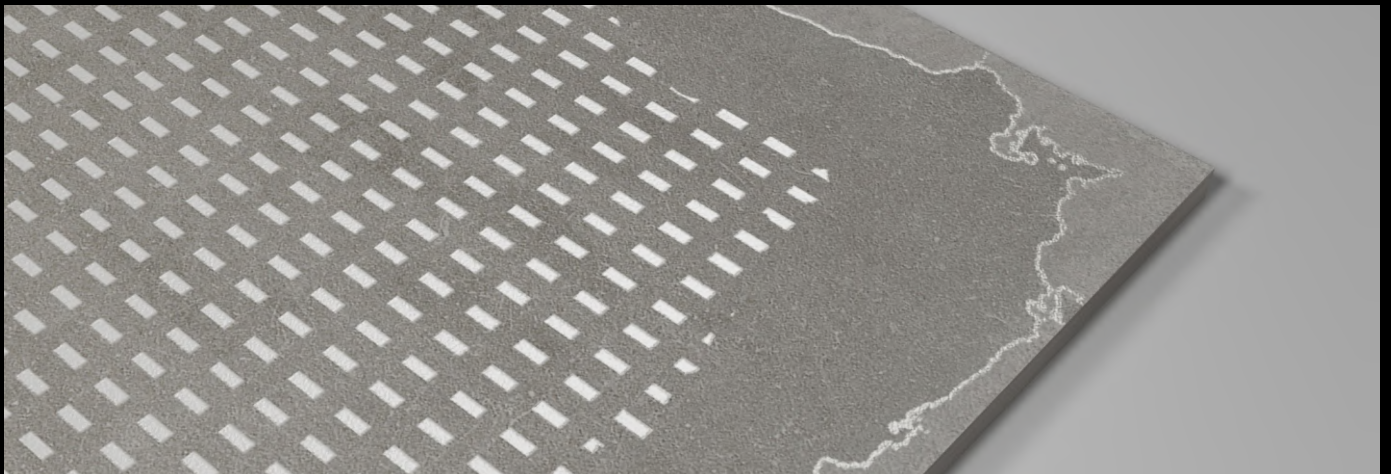
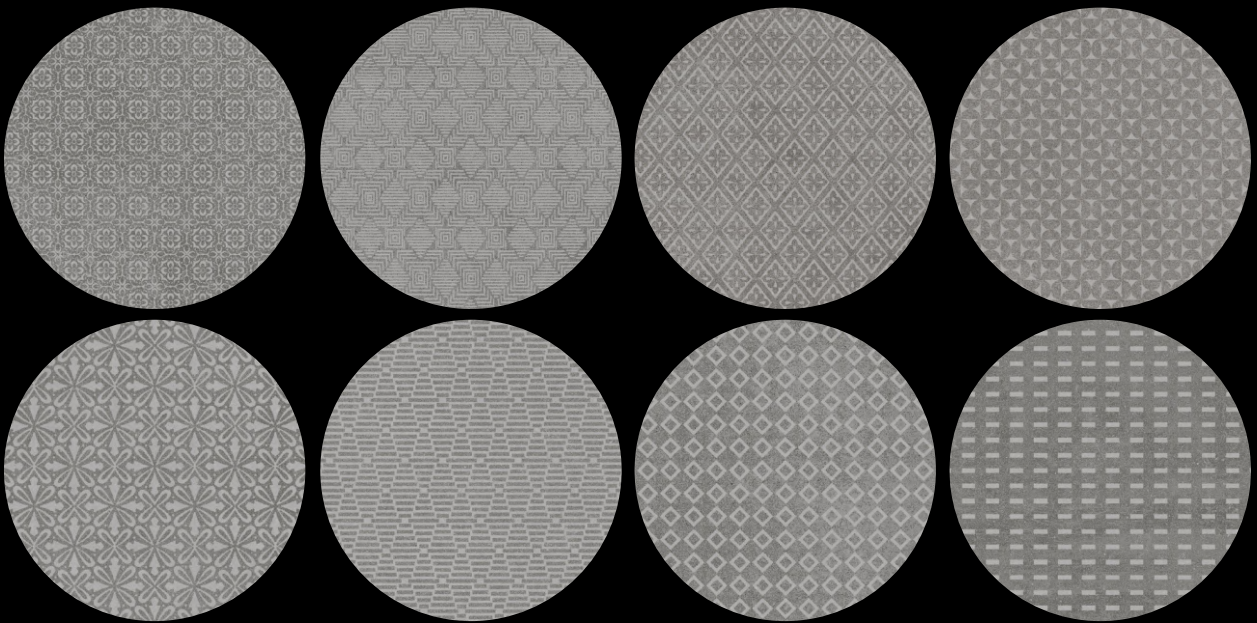


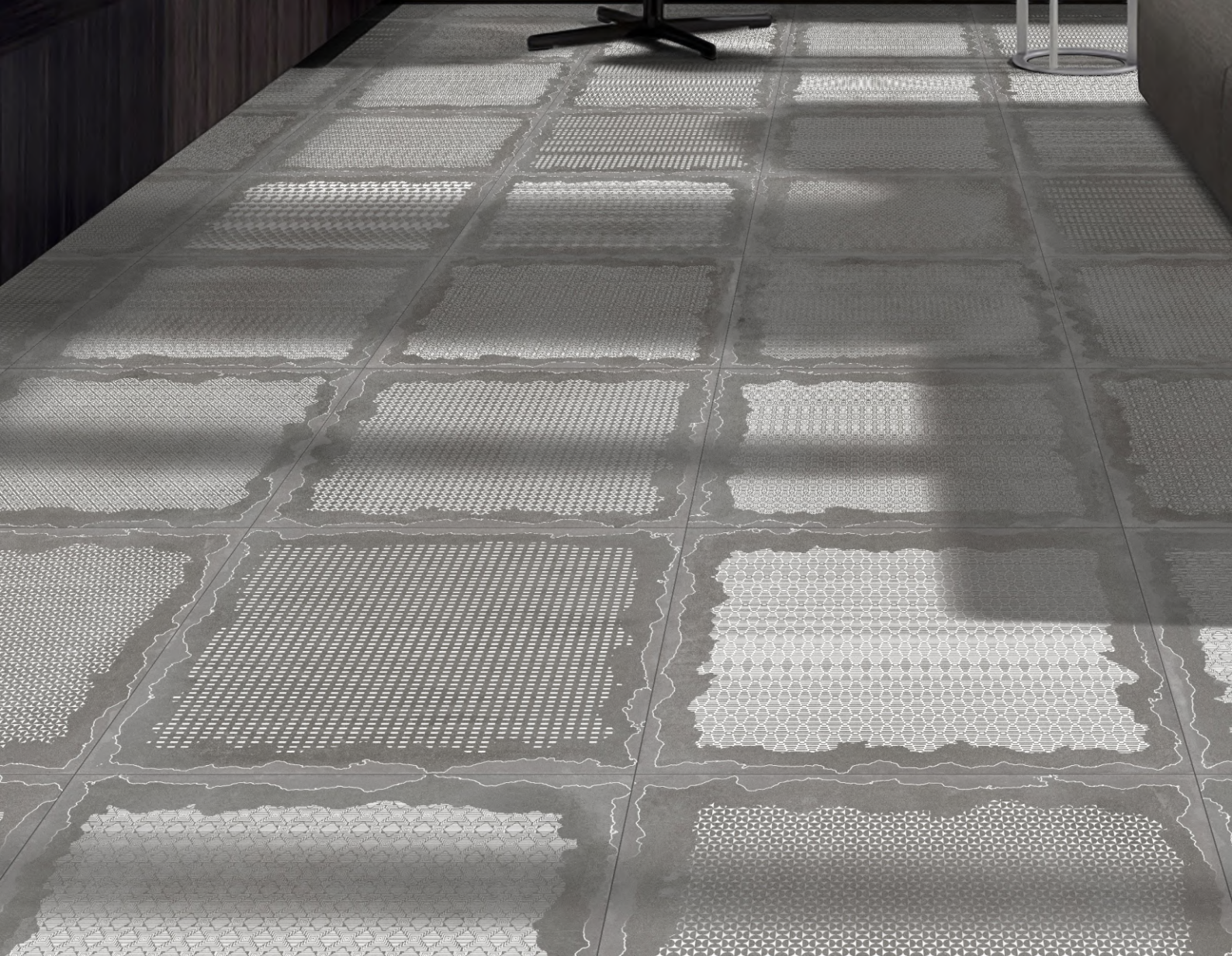
PERLA NERO



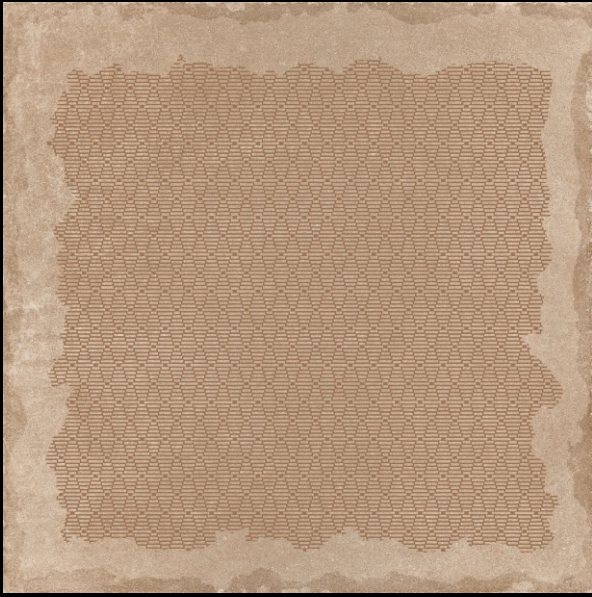
Randoms : 08

*ALL RANDOM ZOOMED PARTS

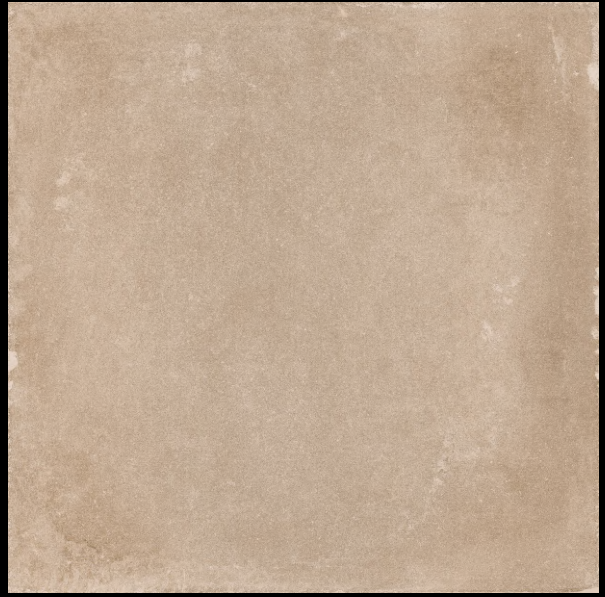




PERLA BROWN DECOR

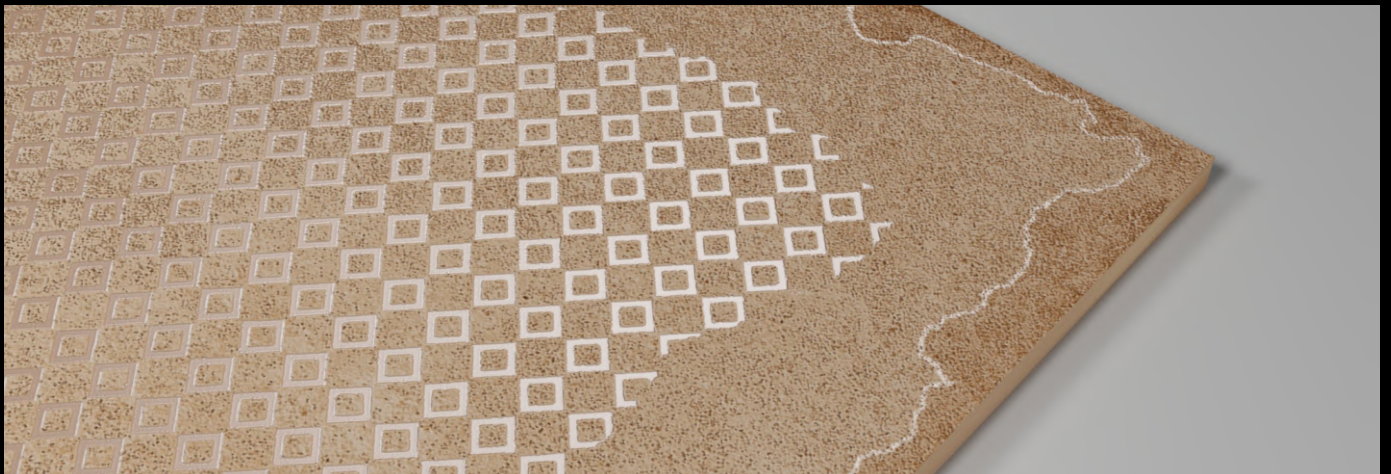


PERLA BROWN



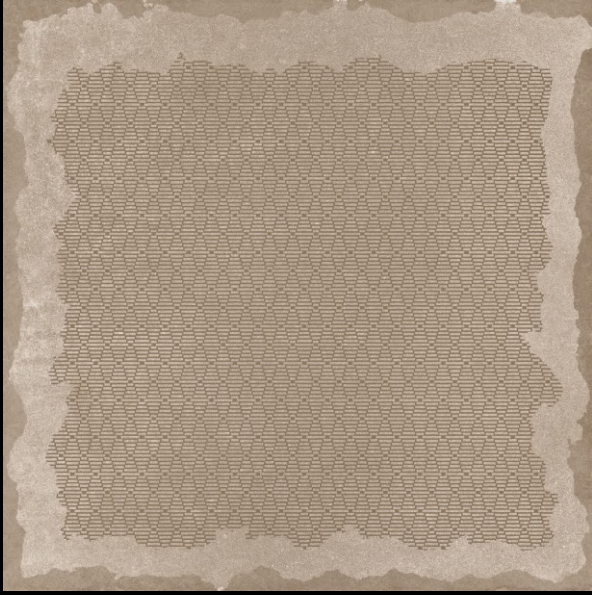
Randoms : 08

*ALL RANDOM ZOOMED PARTS

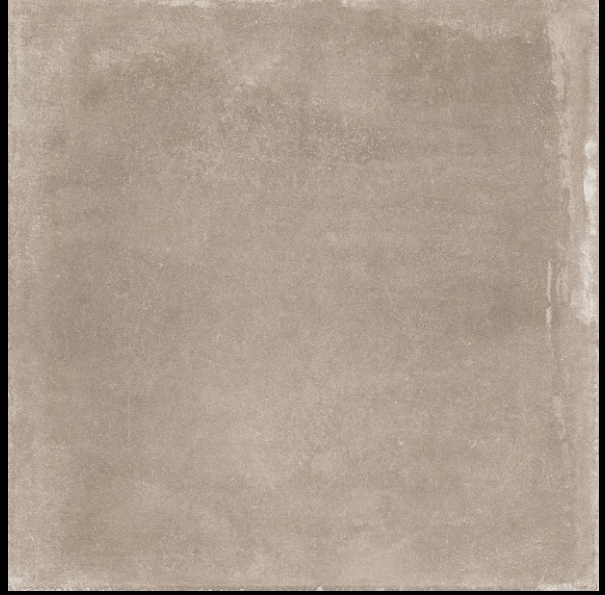




PERLA ROSATA DECOR

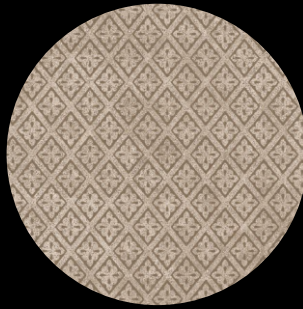
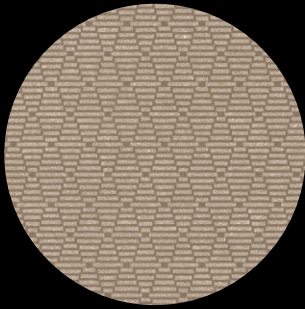
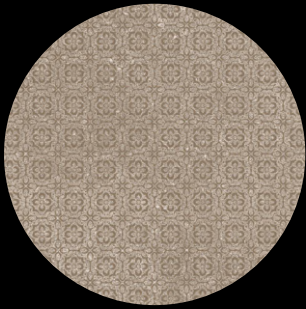
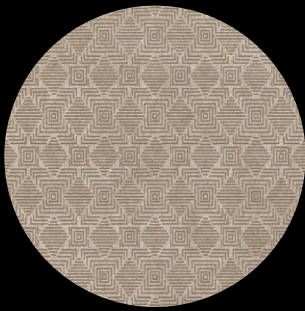
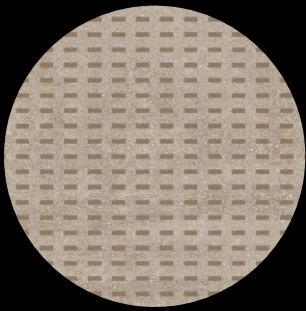


PERLA ROSATA



Randoms : 08

*ALL RANDOM ZOOMED PARTS





TECHNICAL SPECIFICATION

CHARACTERISTIC	STANDARD AS PER ISO-13006 / En14411 GROUP Bla	VALUE	TEST METHOD
REGULATORY PROPERTIES			
Deviation in length & width	± 0.5%	± 0.3%	ISO-10545-2
Deviation in thickness	± 0.5%	± 4.0%	ISO-10545-2
Straightness in side	± 0.5%	± 0.1%	ISO-10545-2
Rectangularity	± 0.5%	± 0.1%	ISO-10545-2
Surface flatness	± 0.5%	± 0.2%	ISO-10545-2
Color difference	Unterned	No change	ISO-10545-16
Glossiness	As per mfg.	Min 90 %	GLOSSO METER
STRUCTURAL PROPERTIES			
Water absorption	< 0.50%	< 0.05%	ISO-10545-3
Apparent density	> 2.0 g/cc	> 2.10 g/cc	DIN 51082
MASSIVE MECHANICAL PROPERTIES			
Modulus of repture	Min. 35 N/mm ²	Min. 40 N/mm ²	ISO-10545-4
Breaking strength	Min. 1300 N	Min. 1800 N	ISO-10545-4
Impact resistance	As per mfg.	Min. 0.55	ISO-10545-5
SURFACE MECHANICAL PROPERTIES			
Resistance to surface abrasion (PEI RATING)	As per mfg.	Min. Class-4	ISO-10545-7
MOH's hardness	As per mfg.	Min. 5	EN 101
THERMO HYGROMRTRIC PROPERTIES			
Frost resistance	No damage	No damage	ISO-10545-12
Thermal shock resistance	No damage	No damage	ISO-10545-9
Moisture expansion	Nil	Nil	ISO-10545-10
Thermal expansion(COE)	Max. 9.0x10 ⁻⁶	Max. 6.5x10 ⁻⁶	ISO-10545-8
Crazing resistance	As per mfg.	Min. 10 Cycle	ISO-10545-11
CHEMICAL PROPERTIES			
Chemical resistance	No damage	No damage	ISO-10545-13
Stain resistance	Min. Class 3	Class 5	ISO-10545-14
SEFETY PROPERTIES			
Slip resistance	As per mfg.	> 0.40	ISO-10545-17
Fire resistance	As per mfg.	Fireproof	N.A.
Lead & Cafmium given off by glazes tiles	As per mfg.	Does not yield Pb & Cd	ISO-10545-15

PACKING DETAILS

SIZE	THICKNESS	PIECES / BOX	AREA / BOX	WEIGHT / BOX
600x600mm	9mm (Approx)	4 pcs.	1.44 sq. mtr.	28.5 kgs